

Recombinant Human CSRP1 Protein, GST-tagged

Cat. No. CSRP1-2017H Lot. No. (See product label)

SPECIFICATION

Product Overview	Human CSRP1 full-length ORF (NP_004069.1, 1 a.a. - 193 a.a.) recombinant protein with GST-tag at N-terminal.
Species	Human
Source	Wheat Germ
Description	This gene encodes a member of the cysteine-rich protein (CSRP) family. This gene family includes a group of LIM domain proteins, which may be involved in regulatory processes important for development and cellular differentiation. The LIM/double zinc-finger motif found in this gene product occurs in proteins with critical functions in gene regulation, cell growth, and somatic differentiation. Alternatively spliced transcript variants have been described. [provided by RefSeq, Aug 2010]
Molecular Mass	47 kDa
AA Sequence	MPNWGGGKCKGVCQKTVYFAEEVQCEGNSFHKSCFLCMVCKKNLDSTTVAVHGE EYCKSCYGGKYGPKGYGYGQGAGTLSTDKGESLGIKHEEAPGHRPTTNPASKFA QKIGGSERCPRCSQAVYAAEKVIGAGKSWHKACFRCAKCGKGLESTTLADKDGIEY CKGCYAKNFGPKGFGFGQGAGALVHSE
Applications	Enzyme-linked Immunoabsorbent Assay Western Blot (Recombinant protein) Antibody Production Protein Array

 Tel: 1-631-559-9269 1-516-512-3133

 Email: info@creative-biomart.com  Fax: 1-631-938-8127

 45-1 Ramsey Road, Shirley, NY 11967, USA

Notes	Best use within three months from the date of receipt of this protein.
Storage	Store at -80 centigrade. Aliquot to avoid repeated freezing and thawing.
Storage Buffer	50 mM Tris-HCl, 10 mM reduced Glutathione, pH=8.0 in the elution buffer.

GENE INFORMATION

Gene Name	CSRP1 cysteine and glycine-rich protein 1 [Homo sapiens]
Official Symbol	CSRP1
Synonyms	CSRP1; cysteine and glycine-rich protein 1; CYRP; CSRP; D1S181E; LIM-domain protein; cysteine-rich protein 1; CRP; CRP1; DKFZp686M148;
Gene ID	1465
mRNA Refseq	NM_001193570
Protein Refseq	NP_001180499
MIM	123876
UniProt ID	P21291

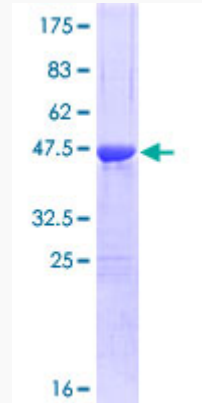
 Tel: 1-631-559-9269 1-516-512-3133

 Email: info@creative-biomart.com  Fax: 1-631-938-8127

 45-1 Ramsey Road, Shirley, NY 11967, USA

Quality Control

Testing:



12.5% SDS-PAGE Stained with Coomassie Blue.

 Tel: 1-631-559-9269 1-516-512-3133

 Email: info@creative-biomart.com  Fax: 1-631-938-8127

 45-1 Ramsey Road, Shirley, NY 11967, USA