

Recombinant Human CSRP1 Protein, Myc/DDK-tagged, C13 and N15-labeled

Cat. No. CSRP1-6681H **Lot. No.** (See product label)

SPECIFICATION

Product Overview	CSRP1 MS Standard C13 and N15-labeled recombinant protein (NP_004069) with a C-terminal MYC/DDK tag, was expressed in HEK293 cells.
Species	Human
Source	HEK293
Description	This gene encodes a member of the cysteine-rich protein (CSRP) family. This gene family includes a group of LIM domain proteins, which may be involved in regulatory processes important for development and cellular differentiation. The LIM/double zinc-finger motif found in this gene product occurs in proteins with critical functions in gene regulation, cell growth, and somatic differentiation. Alternatively spliced transcript variants have been described.
Molecular Mass	20.6 kDa
AA Sequence	MPNWGGGKCKGVCQKTVYFAEEVQCEGNSFHKSCFLCMVCKKNLDSTTVAVHGE EYCKSCYGGKYGPKGYGYGQGAGTLSTDKGESLGIKHEEAPGHRPTTNPASKFA QKIGGSERCPRCSQAVYAAEKVIGAGKSWHKACFRCAKCGKGLESTTLADKDGEIY CKGCYAKNFGPKGFGFGQGAGALVHSETRTRPLEQKLISEEDLAANDILDYKDDDD KV
Purity	> 80% as determined by SDS-PAGE and Coomassie blue staining

 Tel: 1-631-559-9269 1-516-512-3133

 Email: info@creative-biomart.com  Fax: 1-631-938-8127

 45-1 Ramsey Road, Shirley, NY 11967, USA

Stability	Stable for 3 months from receipt of products under proper storage and handling conditions.
Storage	Store at -80 centigrade. Avoid repeated freeze-thaw cycles.
Concentration	50 µg/mL as determined by BCA
Storage Buffer	100 mM glycine, 25 mM Tris-HCl, pH 7.3.
GENE INFORMATION	
Gene Name	CSRP1 cysteine and glycine-rich protein 1 [Homo sapiens (human)]
Official Symbol	CSRP1
Synonyms	CSRP1; cysteine and glycine-rich protein 1; CYRP; CSRP; D1S181E; LIM-domain protein; cysteine-rich protein 1; CRP; CRP1; DKFZp686M148;
Gene ID	1465
mRNA Refseq	NM_004078
Protein Refseq	NP_004069
MIM	123876
UniProt ID	P21291

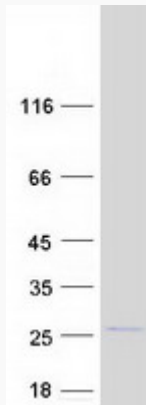
 Tel: 1-631-559-9269 1-516-512-3133

 Email: info@creative-biomart.com  Fax: 1-631-938-8127

 45-1 Ramsey Road, Shirley, NY 11967, USA



SDS-PAGE



☎ Tel: 1-631-559-9269 1-516-512-3133

☎ Email: info@creative-biomart.com ☎ Fax: 1-631-938-8127

☎ 45-1 Ramsey Road, Shirley, NY 11967, USA