

Recombinant Human CSRP2 protein, His-tagged

Cat. No. CSRP2-5233H Lot. No. (See product label)

SPECIFICATION

Product Overview	Recombinant Human CSRP2 protein(Q16527)(2-193aa), fused to N-terminal His tag, was expressed in E. coli.
Species	Human
Source	E.coli
ProteinLength	2-193aa
Form	If the delivery form is liquid, the default storage buffer is Tris/PBS-based buffer, 5%-50% glycerol. If the delivery form is lyophilized powder, the buffer before lyophilization is Tris/PBS-based buffer, 6% Trehalose, pH 8.0.
Molecular Mass	24.8 kDa
Purity	Greater than 90% as determined by SDS-PAGE.
Storage	Store at -20°C/-80°C upon receipt, aliquoting is necessary for multiple use. Avoid repeated freeze-thaw cycles.
Reconstitution	Please reconstitute protein in deionized sterile water to a concentration of 0.1-1.0 mg/mL. We recommend to add 5-50% of glycerol (final concentration) and aliquot for long-term storage at -20°C/-80°C. Our default final concentration of glycerol is 50%.

 Tel: 1-631-559-9269 1-516-512-3133

 Email: info@creative-biomart.com  Fax: 1-631-938-8127

 45-1 Ramsey Road, Shirley, NY 11967, USA

GENE INFORMATION

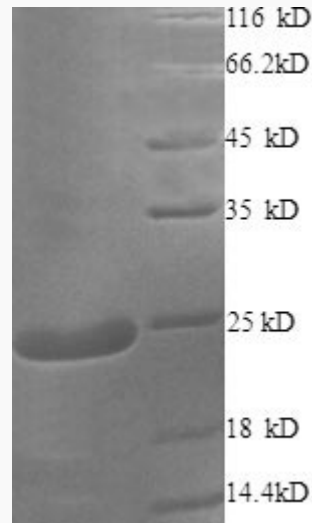
Gene Name	CSRP2 cysteine and glycine-rich protein 2 [Homo sapiens]
Official Symbol	CSRP2
Synonyms	CSRP2; cysteine and glycine-rich protein 2; CRP2; LMO5; SmLIM; LMO-5; cysteine-rich protein 2; LIM domain only protein 5; smooth muscle cell LIM protein; LIM domain only 5, smooth muscle;
Gene ID	1466
mRNA Refseq	NM_001321
Protein Refseq	NP_001312
MIM	601871
UniProt ID	Q16527

 Tel: 1-631-559-9269 1-516-512-3133

 Email: info@creative-biomart.com  Fax: 1-631-938-8127

 45-1 Ramsey Road, Shirley, NY 11967, USA

SDS-PAGE



 Tel: 1-631-559-9269 1-516-512-3133

 Email: info@creative-biomart.com  Fax: 1-631-938-8127

 45-1 Ramsey Road, Shirley, NY 11967, USA