

Recombinant Full Length Human CSRP2 Protein, C-Flag-tagged

Cat. No. CSRP2-840HFL **Lot. No.** (See product label)

SPECIFICATION

Product Overview	Recombinant Full Length Human CSRP2 Protein, fused to Flag-tag at C-terminus, was expressed in Mammalian cells.
Species	Human
Source	Mammalian Cells
Description	CSRP2 is a member of the CSRP family of genes, encoding a group of LIM domain proteins, which may be involved in regulatory processes important for development and cellular differentiation. CRP2 contains two copies of the cysteine-rich amino acid sequence motif (LIM) with putative zinc-binding activity, and may be involved in regulating ordered cell growth. Other genes in the family include CSRP1 and CSRP3. Alternative splicing results in multiple transcript variants.
Form	25 mM Tris HCl, pH 7.3, 100 mM glycine, 10% glycerol.
Molecular Mass	20.8 kDa
AA Sequence	MPVWGGGNKCGACGRTVYHAEVQCDGRSFHRCCFLCMVCRKNLDSTTVAIHDE EYCKSCYGGKYGPKG YGYGQGAGTLNMDRGERLGIKPESVQPHRPTTNPNTSKF AQKYGGAEKCSRCSGDSVYAAEKIIGAGKPWH KNCFRCAKCGKSLESTTLTEKEGEIYCKGKYAKNFGPKGFGYGGAGALVHAQTRT RPLEQKLISEEDLAANDILDYKDDDDKV

 Tel: 1-631-559-9269 1-516-512-3133

 Email: info@creative-biomart.com  Fax: 1-631-938-8127

 45-1 Ramsey Road, Shirley, NY 11967, USA

Purity	> 80% as determined by SDS-PAGE and Coomassie blue staining.
Stability	Stable for 12 months from the date of receipt of the product under proper storage and handling conditions. Avoid repeated freeze-thaw cycles.
Storage	Store at -80 centigrade.
Concentration	>50 ug/mL as determined by microplate BCA method.
Preparation	Recombinant protein was captured through anti-DDK affinity column followed by conventional chromatography steps.
Full Length	Full L.

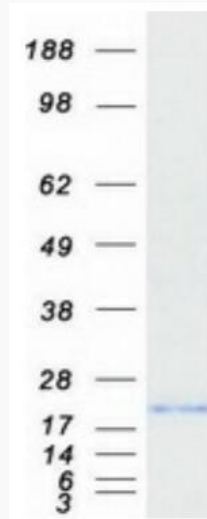
GENE INFORMATION

Gene Name	CSRP2 cysteine and glycine rich protein 2 [Homo sapiens (human)]
Official Symbol	CSRP2
Synonyms	CRP2; LMO5; SmLIM
Gene ID	1466
mRNA Refseq	NM_001321.3
Protein Refseq	NP_001312.1
MIM	601871
UniProt ID	Q16527

 Tel: 1-631-559-9269 1-516-512-3133

 Email: info@creative-biomart.com  Fax: 1-631-938-8127

 45-1 Ramsey Road, Shirley, NY 11967, USA



Coomassie blue staining of purified CSRP2 protein.

 Tel: 1-631-559-9269 1-516-512-3133

 Email: info@creative-biomart.com  Fax: 1-631-938-8127

 45-1 Ramsey Road, Shirley, NY 11967, USA