

Recombinant Human Cystatin C

Cat. No. CST3-2713H **Lot. No.** (See product label)

SPECIFICATION

Product Overview	Recombinant Human Cystatin C is expressed in <i>Pichia pastoris</i> .
Species	Human
Source	<i>P.pastoris</i>
Description	Native Cystatin C in human urine is found in two different forms: one with pI 9.2 and the other with pI 7.8 by elimination of small basic peptides or amino acids from the N-terminal end of protein. Cystatin C has been studied for its role in predicting new onset or deteriorating cardiovascular disease. This cytokine is produced in a serum-free, chemically defined media.
Product Presentation	Single homogenous batch supplied lyophilised from 0.02M NH ₄ HCO ₃ . May contain traces of buffer salts.
Starting Material	Expressed from <i>Pichia pastoris</i> . N-Terminal sequence confirms first eight amino acids as: SSPGKPPR.
Purity	Nominally greater than 98% of the protein is Cystatin C.
Reconstitution	Use of a pH neutral buffer is recommended.
Storage	Store at 2-8°C (short term). Store <-15°C (long term).

GENE INFORMATION

 Tel: 1-631-559-9269 1-516-512-3133

 Email: info@creative-biomart.com  Fax: 1-631-938-8127

 45-1 Ramsey Road, Shirley, NY 11967, USA

Gene Name	CST3 cystatin C [Homo sapiens]
Synonyms	CST3; cystatin C; ARMD11; MGC117328; CST3; cystatin C (amyloid angiopathy and cerebral hemorrhage); cystatin C1; cystatin 3; Neuroendocrine basic polypeptide2; OTTHUMP000001641822; ARMD112; post-gamma-globulin; bA218C14.4 (cystatin C); OTTHUMP00000164181; Gamma-trace; gamma-trace; Post-gamma-globulin; MGC117328; Cystatin-3
Gene ID	1471
mRNA Refseq	NM_000099
Protein Refseq	NP_000090
MIM	604312
UniProt ID	P01034
Chromosome Location	20p11.21
Function	beta-amyloid binding; cysteine-type endopeptidase inhibitor activity; peptidase inhibitor activity; protease binding; protein binding

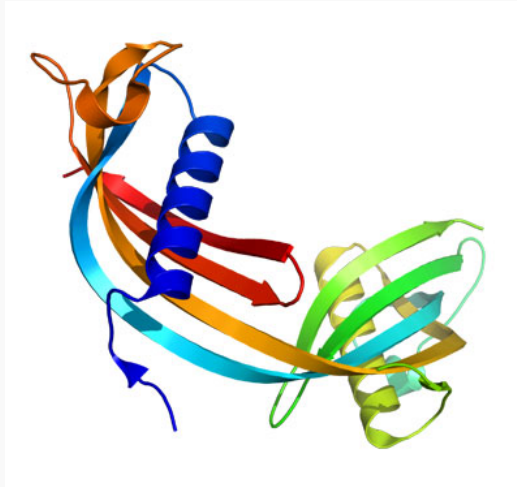
 Tel: 1-631-559-9269 1-516-512-3133

 Email: info@creative-biomart.com  Fax: 1-631-938-8127

 45-1 Ramsey Road, Shirley, NY 11967, USA



PDB rendering based
on 1r4c.



☎ Tel: 1-631-559-9269 1-516-512-3133

☎ Email: info@creative-biomart.com ☎ Fax: 1-631-938-8127

☎ 45-1 Ramsey Road, Shirley, NY 11967, USA