

## Recombinant Human CST6 Protein, GST-tagged

**Cat. No.** CST6-2029H    **Lot. No.** (See product label)

### SPECIFICATION

<b>Product Overview</b>	Human CST6 full-length ORF ( AAH31334, 29 a.a. - 149 a.a.) recombinant protein with GST-tag at N-terminal.
<b>Species</b>	Human
<b>Source</b>	Wheat Germ
<b>Description</b>	<p>The cystatin superfamily encompasses proteins that contain multiple cystatin-like sequences. Some of the members are active cysteine protease inhibitors, while others have lost or perhaps never acquired this inhibitory activity. There are three inhibitory families in the superfamily, including the type 1 cystatins (stefins), type 2 cystatins and the kininogens. The type 2 cystatin proteins are a class of cysteine proteinase inhibitors found in a variety of human fluids and secretions, where they appear to provide protective functions. This gene encodes a cystatin from the type 2 family, which is down-regulated in metastatic breast tumor cells as compared to primary tumor cells. Loss of expression is likely associated with the progression of a primary tumor to a metastatic phenotype. [provided by RefSeq, Jul 2008]</p>
<b>Molecular Mass</b>	39.05 kDa
<b>AA Sequence</b>	RPQERMVGEIRDLSPPDPVQKAAQAASYNMGSNSIYYFRDTHIIKAQSQLVAGIKYFLTMEMGSTDCRKTRVTGDHVDLTTCPAAGAQQEKLRCDFEVLVVPWQNSSQLLKHNCVQM
<b>Applications</b>	Enzyme-linked Immunoabsorbent Assay

 Tel: 1-631-559-9269    1-516-512-3133

 Email: [info@creative-biomart.com](mailto:info@creative-biomart.com)     Fax: 1-631-938-8127

 45-1 Ramsey Road, Shirley, NY 11967, USA

Western Blot (Recombinant protein)  
 Antibody Production  
 Protein Array

<b>Notes</b>	Best use within three months from the date of receipt of this protein.
<b>Storage</b>	Store at -80 centigrade. Aliquot to avoid repeated freezing and thawing.
<b>Storage Buffer</b>	50 mM Tris-HCl, 10 mM reduced Glutathione, pH=8.0 in the elution buffer.

## GENE INFORMATION

<b>Gene Name</b>	CST6 cystatin E/M [ Homo sapiens ]
<b>Official Symbol</b>	CST6
<b>Synonyms</b>	CST6; cystatin E/M; cystatin-M; cystatin 6; cystatin M; cystatin-6; cystatin-E; cystatin M/E; cysteine proteinase inhibitor;
<b>Gene ID</b>	1474
<b>mRNA Refseq</b>	NM_001323
<b>Protein Refseq</b>	NP_001314
<b>MIM</b>	601891
<b>UniProt ID</b>	Q15828

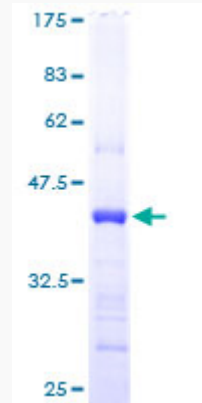
 Tel: 1-631-559-9269 1-516-512-3133

 Email: [info@creative-biomart.com](mailto:info@creative-biomart.com)  Fax: 1-631-938-8127

 45-1 Ramsey Road, Shirley, NY 11967, USA

**Quality Control**

**Testing:**



12.5% SDS-PAGE Stained with Coomassie Blue.

 Tel: 1-631-559-9269 1-516-512-3133

 Email: [info@creative-biomart.com](mailto:info@creative-biomart.com)  Fax: 1-631-938-8127

 45-1 Ramsey Road, Shirley, NY 11967, USA