

Recombinant Cattle CSTB protein, His-tagged

Cat. No. CSTB-1659C Lot. No. (See product label)

SPECIFICATION

Product Overview	Recombinant Cattle CSTB aa. (Met1~Phe98) fused with N-terminal His tag was produced in E. coli cells.
Species	Cattle
Source	E.coli
ProteinLength	Met1~Phe98
Form	Freeze-dried powder
Molecular Mass	15kDa as determined by SDS-PAGE reducing conditions.
Endotoxin	<1.0EU per 1ug (determined by the LAL method)
Purity	>97%
Applications	Positive Control; Immunogen; SDS-PAGE; WB.
Stability	The thermal stability is described by the loss rate. The loss rate was determined by accelerated thermal degradation test, that is, incubate the protein at 37°C for 48h, and no obvious degradation and precipitation were observed. The loss rate is less than 5% within the expiration date under appropriate storage condition.
Storage	Avoid repeated freeze/thaw cycles. Store at 2-8°C for one month. Aliquot and store at

 Tel: 1-631-559-9269 1-516-512-3133

 Email: info@creative-biomart.com  Fax: 1-631-938-8127

 45-1 Ramsey Road, Shirley, NY 11967, USA

-80°C for 12 months.

Concentration 200µg/mL

Storage buffer 20mM Tris, 150mM NaCl, pH8.0, containing 1mM EDTA, 1mM DTT, 0.01% SKL, 5% Trehalose and Proclin300.

Reconstitution Reconstitute in 20mM Tris, 150mM NaCl (pH8.0) to a concentration of 0.1-1.0 mg/mL. Do not vortex.

Isoelectric Point 6.8

GENE INFORMATION

Gene Name CSTB cystatin B (stefin B) [Bos taurus (cattle)]

Official Symbol CSTB

Synonyms CSTB; cystatin-B; stefin-B

Gene ID 512805

mRNA Refseq NM_001037461.2

Protein Refseq NP_001032538.1

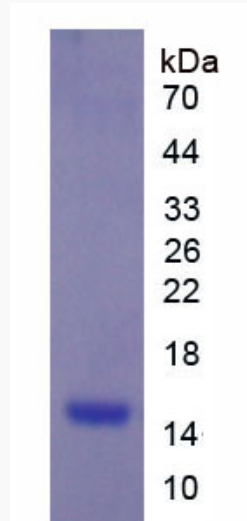
UniProt ID P25417

 Tel: 1-631-559-9269 1-516-512-3133

 Email: info@creative-biomart.com  Fax: 1-631-938-8127

 45-1 Ramsey Road, Shirley, NY 11967, USA

SDS-PAGE



 Tel: 1-631-559-9269 1-516-512-3133

 Email: info@creative-biomart.com  Fax: 1-631-938-8127

 45-1 Ramsey Road, Shirley, NY 11967, USA