

Recombinant Human CSTB Protein, GST-tagged

Cat. No. CSTB-2038H Lot. No. (See product label)

SPECIFICATION

Product Overview Human CSTB full-length ORF (AAH03370.1, 1 a.a. - 98 a.a.) recombinant protein with GST-tag at N-terminal.

Species Human

Source Wheat Germ

Description The cystatin superfamily encompasses proteins that contain multiple cystatin-like sequences. Some of the members are active cysteine protease inhibitors, while others have lost or perhaps never acquired this inhibitory activity. There are three inhibitory families in the superfamily, including the type 1 cystatins (stefins), type 2 cystatins and kininogens. This gene encodes a stefin that functions as an intracellular thiol protease inhibitor. The protein is able to form a dimer stabilized by noncovalent forces, inhibiting papain and cathepsins I, h and b. The protein is thought to play a role in protecting against the proteases leaking from lysosomes. Evidence indicates that mutations in this gene are responsible for the primary defects in patients with progressive myoclonic epilepsy (EPM1). One type of mutation responsible for EPM1 is the expansion in the promoter region of this gene of a CCCC GCCCGCG repeat from 2-3 copies to 30-78 copies. [provided by RefSeq, Jul 2016]

Molecular Mass 36.52 kDa

AA Sequence MMCGAPSATQPATAETQHIADQVRSQLEEKENKKFPVFKAVSFKSQVVAGTNYFIK
VHVGDEDFVHLRVFQSLPHENKPLTLSNYQTNKAKHDELTYF

 Tel: 1-631-559-9269 1-516-512-3133

 Email: info@creative-biomart.com  Fax: 1-631-938-8127

 45-1 Ramsey Road, Shirley, NY 11967, USA



Applications	Enzyme-linked Immunoabsorbent Assay Western Blot (Recombinant protein) Antibody Production Protein Array
Notes	Best use within three months from the date of receipt of this protein.
Storage	Store at -80 centigrade. Aliquot to avoid repeated freezing and thawing.
Storage Buffer	50 mM Tris-HCl, 10 mM reduced Glutathione, pH=8.0 in the elution buffer.

GENE INFORMATION

Gene Name	CSTB cystatin B (stefin B) [Homo sapiens]
Official Symbol	CSTB
Synonyms	CSTB; cystatin B (stefin B); EPM1, STFB; cystatin-B; CST6; PME; CPI-B; liver thiol proteinase inhibitor; ULD; EPM1; STFB; EPM1A;
Gene ID	1476
mRNA Refseq	NM_000100
Protein Refseq	NP_000091
MIM	601145
UniProt ID	P04080

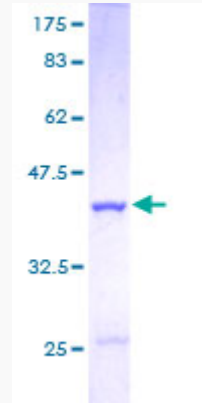
Tel: 1-631-559-9269 1-516-512-3133

Email: info@creative-biomart.com Fax: 1-631-938-8127

45-1 Ramsey Road, Shirley, NY 11967, USA

Quality Control

Testing:



12.5% SDS-PAGE Stained with Coomassie Blue.

 Tel: 1-631-559-9269 1-516-512-3133

 Email: info@creative-biomart.com  Fax: 1-631-938-8127

 45-1 Ramsey Road, Shirley, NY 11967, USA