

# Recombinant Human CSTB Protein, Myc/DDK-tagged, C13 and N15-labeled

**Cat. No.** CSTB-2382H    **Lot. No.** (See product label)

## SPECIFICATION

<b>Product Overview</b>	CSTB MS Standard C13 and N15-labeled recombinant protein (NP_000091) with a C-terminal MYC/DDK tag, was expressed in HEK293 cells.
<b>Species</b>	Human
<b>Source</b>	HEK293
<b>Description</b>	<p>The cystatin superfamily encompasses proteins that contain multiple cystatin-like sequences. Some of the members are active cysteine protease inhibitors, while others have lost or perhaps never acquired this inhibitory activity. There are three inhibitory families in the superfamily, including the type 1 cystatins (stefins), type 2 cystatins and kininogens. This gene encodes a stefin that functions as an intracellular thiol protease inhibitor. The protein is able to form a dimer stabilized by noncovalent forces, inhibiting papain and cathepsins I, h and b. The protein is thought to play a role in protecting against the proteases leaking from lysosomes. Evidence indicates that mutations in this gene are responsible for the primary defects in patients with progressive myoclonic epilepsy (EPM1). One type of mutation responsible for EPM1 is the expansion in the promoter region of this gene of a CCCCCCGCCGCG repeat from 2-3 copies to 30-78 copies.</p>
<b>Molecular Mass</b>	11.1 kDa
<b>AA Sequence</b>	MMCGAPSATQPATAETQHIADQVRSQLEEKENKKFPVFKAVSFKSQVVAGTNYFIK

 Tel: 1-631-559-9269    1-516-512-3133

 Email: [info@creative-biomart.com](mailto:info@creative-biomart.com)     Fax: 1-631-938-8127

 45-1 Ramsey Road, Shirley, NY 11967, USA

VHVGDEDFVHLRVFQSLPHENKPLTLSNYQTNKAKHDELTYFTRTRPLEQKLISEED  
LAANDILDYKDDDDKV

**Purity** > 80% as determined by SDS-PAGE and Coomassie blue staining

**Stability** Stable for 3 months from receipt of products under proper storage and handling conditions.

**Storage** Store at -80 centigrade. Avoid repeated freeze-thaw cycles.

**Concentration** 50 µg/mL as determined by BCA

**Storage Buffer** 100 mM glycine, 25 mM Tris-HCl, pH 7.3.

## GENE INFORMATION

**Gene Name** CSTB cystatin B [ *Homo sapiens* (human) ]

**Official Symbol** CSTB

**Synonyms** CSTB; cystatin B (stefin B); EPM1, STFB; cystatin-B; CST6; PME; CPI-B; liver thiol proteinase inhibitor; ULD; EPM1; STFB; EPM1A;

**Gene ID** 1476

**mRNA Refseq** NM\_000100

**Protein Refseq** NP\_000091

**MIM** 601145

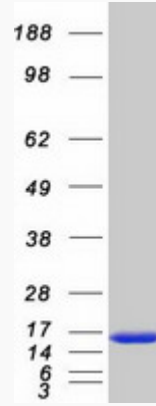
 Tel: 1-631-559-9269 1-516-512-3133

 Email: [info@creative-biomart.com](mailto:info@creative-biomart.com)  Fax: 1-631-938-8127

 45-1 Ramsey Road, Shirley, NY 11967, USA

UniProt ID P04080

SDS-PAGE



 Tel: 1-631-559-9269 1-516-512-3133

 Email: [info@creative-biomart.com](mailto:info@creative-biomart.com)  Fax: 1-631-938-8127

 45-1 Ramsey Road, Shirley, NY 11967, USA