

## Recombinant Human CSTB protein, His-tagged

Cat. No. CSTB-6699H Lot. No. (See product label)

### SPECIFICATION

<b>Product Overview</b>	Recombinant Human CSTB protein(P04080)(113aa), fused with N-terminal His tag, was expressed in E. coli.
<b>Species</b>	Human
<b>Source</b>	E.coli
<b>Protein Length</b>	113aa(including fusion tag)
<b>Tag</b>	N-His
<b>Form</b>	20mM Tris.Cl, 50mM NaCl, 20% Glycerol, pH7.0.
<b>Molecular Mass</b>	13.0kDa(including fusion tag)
<b>Storage</b>	Store at -80°C and avoid repeated freeze-thaw cycles.
<b>Reconstitution</b>	It is recommended that sterile water be added to the vial to prepare a stock solution of 0.2 ug/ul. Centrifuge the vial at 4°C before opening to recover the entire contents.

### GENE INFORMATION

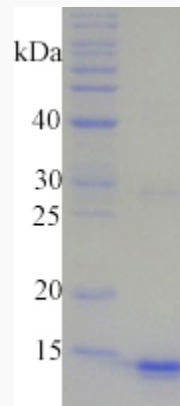
<b>Gene Name</b>	CSTB cystatin B (stefin B) [ Homo sapiens ]
<b>Official Symbol</b>	CSTB

 Tel: 1-631-559-9269 1-516-512-3133

 Email: [info@creative-biomart.com](mailto:info@creative-biomart.com)  Fax: 1-631-938-8127

 45-1 Ramsey Road, Shirley, NY 11967, USA

<b>Synonyms</b>	CSTB; cystatin B (stefin B); EPM1, STFB; cystatin-B; CST6; PME; CPI-B; liver thiol proteinase inhibitor; ULD; EPM1; STFB; EPM1A;
<b>Gene ID</b>	1476
<b>mRNA Refseq</b>	NM_000100
<b>Protein Refseq</b>	NP_000091
<b>MIM</b>	601145
<b>UniProt ID</b>	P04080

**SDS-PAGE**

 Tel: 1-631-559-9269 1-516-512-3133

 Email: [info@creative-biomart.com](mailto:info@creative-biomart.com)  Fax: 1-631-938-8127

 45-1 Ramsey Road, Shirley, NY 11967, USA