

Recombinant Human CSTF1 Protein, GST-tagged

Cat. No. CSTF1-2040H Lot. No. (See product label)

SPECIFICATION

Product Overview	Human CSTF1 full-length ORF (AAH01011, 1 a.a. - 431 a.a.) recombinant protein with GST-tag at N-terminal.
Species	Human
Source	Wheat Germ
Description	This gene encodes one of three subunits which combine to form cleavage stimulation factor (CSTF). CSTF is involved in the polyadenylation and 3'end cleavage of pre-mRNAs. Similar to mammalian G protein beta subunits, this protein contains transducin-like repeats. Several transcript variants with different 5' UTR, but encoding the same protein, have been found for this gene. [provided by RefSeq, Jul 2008]
Molecular Mass	73.15 kDa
AA Sequence	MYRTKVGLKDRQQLYKLIISQLLYDGYISIANGLINEIKPQSVCAPSEQLLHLIKLGMEN DDTAVQYAIGRSDTVAPGTGIDLEFDADVQTMSPEASEYETCYVTSHKGPCR VATY SRDGQLIATGSADASIKILDTERMLAKSAMP IEVMMNETAQQNMENHPVIRTLYDHV DEVTCLAFHPT EQILASGSRDYTLKLF DYSKPSAKRAF KYIQEAEMLR SISFHPSGDFI LVGTQHPTLR LYDINTFQCFVSCNPQDQHTDAICSVNYNSSANMYVTGSKDGC IKL WDGVSNRCITTFEKAHDGAEVCSAIFSKNSKYILSSGKDSVAKLWEISTGR TLVRYT GAGLSGRQVHRTQAVFNHTEDYVLLPDERTISLCCWDSRTAERRNLLSLGHNNIVR CIVHSPTNPGFMTCSDDFRARFWYRRSTTD
Applications	Enzyme-linked Immunoabsorbent Assay

 Tel: 1-631-559-9269 1-516-512-3133

 Email: info@creative-biomart.com  Fax: 1-631-938-8127

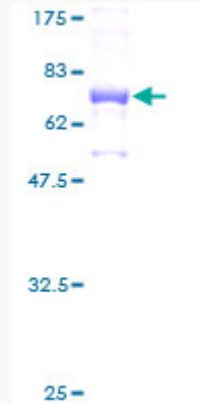
 45-1 Ramsey Road, Shirley, NY 11967, USA

	Western Blot (Recombinant protein) Antibody Production Protein Array
Notes	Best use within three months from the date of receipt of this protein.
Storage	Store at -80 centigrade. Aliquot to avoid repeated freezing and thawing.
Storage Buffer	50 mM Tris-HCl, 10 mM reduced Glutathione, pH=8.0 in the elution buffer.
GENE INFORMATION	
Gene Name	CSTF1 cleavage stimulation factor, 3 pre-RNA, subunit 1, 50kDa [Homo sapiens]
Official Symbol	CSTF1
Synonyms	CSTF1; cleavage stimulation factor, 3 pre-RNA, subunit 1, 50kDa; cleavage stimulation factor, 3 pre RNA, subunit 1, 50kD; cleavage stimulation factor subunit 1; CF-1 50 kDa subunit; CSTF 50 kDa subunit; cleavage stimulation factor 50 kDa subunit; CstF-50; CstFp50;
Gene ID	1477
mRNA Refseq	NM_001033521
Protein Refseq	NP_001028693
MIM	600369
UniProt ID	Q05048

 Tel: 1-631-559-9269 1-516-512-3133

 Email: info@creative-biomart.com  Fax: 1-631-938-8127

 45-1 Ramsey Road, Shirley, NY 11967, USA



Quality Control

Testing:

12.5% SDS-PAGE Stained with Coomassie Blue.

 Tel: 1-631-559-9269 1-516-512-3133

 Email: info@creative-biomart.com  Fax: 1-631-938-8127

 45-1 Ramsey Road, Shirley, NY 11967, USA