

Recombinant Human CSTF1 Protein, Myc/DDK-tagged, C13 and N15-labeled

Cat. No. CSTF1-4172H Lot. No. (See product label)

SPECIFICATION

Product Overview

CSTF1 MS Standard C13 and N15-labeled recombinant protein (NP_001315) with a C-terminal MYC/DDK tag, was expressed in HEK293 cells.

Species

Human

Source

HEK293

Description

This gene encodes one of three subunits which combine to form cleavage stimulation factor (CSTF). CSTF is involved in the polyadenylation and 3'end cleavage of pre-mRNAs. Similar to mammalian G protein beta subunits, this protein contains transducin-like repeats. Several transcript variants with different 5' UTR, but encoding the same protein, have been found for this gene.

Molecular Mass

48.4 kDa

AA Sequence

MYRTKVGLKDRQQLYKLIISQLLYDGYISIANGLINEIKPQSVCAPSEQLLHLIKLGMEN
DDTAVQYAIGRSDTVAPGTGIDLEFDADVQTMSP EASEYETCYVTSHKGPCR VATY
SRD GQLIATGSADASIKILDTERMLAKSAMP IEVMMNETAQQN MENHPVIRTLYDHV
DEVTCLAFHPTEQILASGSRDYTLK LFDYSKPSAKRAF KYIQEAEMLR SISFHPSGDFI
LVGTQHPTLR LRYDINTFQCFVSCNPQDQHTDAICSVNYNSSANMYVTGSKDGC IKL
WDGVS NRCITTFEKAHDGAEVCSAIFSKNSKYILSSGKDSVAKLWEISTGR TLVRYT
GAGLSGRQVHRTQAVFNHTEDYVLLPDERTISLCCWDSRTAERRNLLSLGHNNIVR
CIVHSPTNPGFMTCSDDFRARFWYRRSTTDTRTRPLEQKLISEEDLAANDILDYKDD

Tel: 1-631-559-9269 1-516-512-3133

Email: info@creative-biomart.com Fax: 1-631-938-8127

45-1 Ramsey Road, Shirley, NY 11967, USA

	DDKV
Purity	> 80% as determined by SDS-PAGE and Coomassie blue staining
Stability	Stable for 3 months from receipt of products under proper storage and handling conditions.
Storage	Store at -80 centigrade. Avoid repeated freeze-thaw cycles.
Concentration	50 µg/mL as determined by BCA
Storage Buffer	100 mM glycine, 25 mM Tris-HCl, pH 7.3.
GENE INFORMATION	
Gene Name	CSTF1 cleavage stimulation factor subunit 1 [Homo sapiens (human)]
Official Symbol	CSTF1
Synonyms	CSTF1; cleavage stimulation factor, 3 pre-RNA, subunit 1, 50kDa; cleavage stimulation factor, 3 pre RNA, subunit 1, 50kD; cleavage stimulation factor subunit 1; CF-1 50 kDa subunit; CSTF 50 kDa subunit; cleavage stimulation factor 50 kDa subunit; CstF-50; CstFp50;
Gene ID	1477
mRNA Refseq	NM_001324
Protein Refseq	NP_001315
MIM	600369

 Tel: 1-631-559-9269 1-516-512-3133

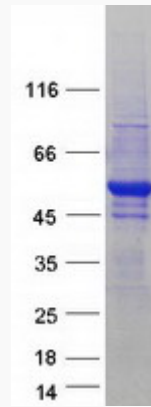
 Email: info@creative-biomart.com  Fax: 1-631-938-8127

 45-1 Ramsey Road, Shirley, NY 11967, USA

UniProt ID

Q05048

SDS-PAGE



 Tel: 1-631-559-9269 1-516-512-3133

 Email: info@creative-biomart.com  Fax: 1-631-938-8127

 45-1 Ramsey Road, Shirley, NY 11967, USA