

# Recombinant Human CSTF1 Protein, Myc/DDK-tagged, C13 and N15-labeled

**Cat. No.** CSTF1-775H    **Lot. No.** (See product label)

## SPECIFICATION

### Product Overview

CSTF1 MS Standard C13 and N15-labeled recombinant protein (NP\_001028694) with a C-terminal MYC/DDK tag, was expressed in HEK293 cells.

### Species

Human

### Source

HEK293

### Description

This gene encodes one of three subunits which combine to form cleavage stimulation factor (CSTF). CSTF is involved in the polyadenylation and 3'end cleavage of pre-mRNAs. Similar to mammalian G protein beta subunits, this protein contains transducin-like repeats. Several transcript variants with different 5' UTR, but encoding the same protein, have been found for this gene.

### Molecular Mass

48.4 kDa

### AA Sequence

MYRTKVGLKDRQQLYKLIISQLLYDGYISIANGLINEIKPQSVCAPSEQLLHLIKLGMEN  
DDTAVQYAIGRSDTVAPGTGIDLEFDADVQTMSPLEASEYETCYVTSHKGPCR VATY  
SRDGLIATGSADASIKILDTERMLAKSAMP IEVMMNETAQQN MENHPVIRTLYDHV  
DEVTCLAFHPTEQILASGSRDYTLKLFDY SKPSAKRAF KYIQEAEMLR SISFHPSGDFI  
LVGTQHPTLR LRYDINTFQCFVSCNPQDQHTDAICSVNYNSSANMYVTGSKDGC IKL  
WDGVS NRCITTFEKAHDGAEVCSAIFSKNSKYILSSGKDSVAKLWEISTGR TLVRYT  
GAGLSGRQVHRTQAVFNHTEDYVLLPDERTISLCCWDSRTAERRNLLSLGHNNIVR  
CIVHSPTNPGFMTCSDDFRARFWYRRSTTDTRTRPLEQKLISEEDLAANDILDYKDD

 Tel: 1-631-559-9269    1-516-512-3133

 Email: [info@creative-biomart.com](mailto:info@creative-biomart.com)     Fax: 1-631-938-8127

 45-1 Ramsey Road, Shirley, NY 11967, USA

	DDKV
<b>Purity</b>	> 80% as determined by SDS-PAGE and Coomassie blue staining
<b>Stability</b>	Stable for 3 months from receipt of products under proper storage and handling conditions.
<b>Storage</b>	Store at -80 centigrade. Avoid repeated freeze-thaw cycles.
<b>Concentration</b>	50 µg/mL as determined by BCA
<b>Storage Buffer</b>	100 mM glycine, 25 mM Tris-HCl, pH 7.3.

## GENE INFORMATION

<b>Gene Name</b>	CSTF1 cleavage stimulation factor subunit 1 [ Homo sapiens (human) ]
<b>Official Symbol</b>	CSTF1
<b>Synonyms</b>	CSTF1; cleavage stimulation factor, 3 pre-RNA, subunit 1, 50kDa; cleavage stimulation factor, 3 pre RNA, subunit 1, 50kD; cleavage stimulation factor subunit 1; CF-1 50 kDa subunit; CSTF 50 kDa subunit; cleavage stimulation factor 50 kDa subunit; CstF-50; CstFp50;
<b>Gene ID</b>	1477
<b>mRNA Refseq</b>	NM_001033522
<b>Protein Refseq</b>	NP_001028694
<b>MIM</b>	600369

 Tel: 1-631-559-9269 1-516-512-3133

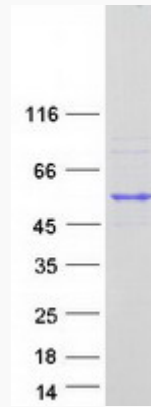
 Email: [info@creative-biomart.com](mailto:info@creative-biomart.com)  Fax: 1-631-938-8127

 45-1 Ramsey Road, Shirley, NY 11967, USA

UniProt ID

Q05048

SDS-PAGE



 Tel: 1-631-559-9269 1-516-512-3133

 Email: [info@creative-biomart.com](mailto:info@creative-biomart.com)  Fax: 1-631-938-8127

 45-1 Ramsey Road, Shirley, NY 11967, USA