

Recombinant Human CSTF2 Protein, GST-tagged

Cat. No. CSTF2-2042H Lot. No. (See product label)

SPECIFICATION

Product Overview	Human CSTF2 full-length ORF (AAH17712, 1 a.a. - 577 a.a.) recombinant protein with GST-tag at N-terminal.
Species	Human
Source	Wheat Germ
Description	This gene encodes a nuclear protein with an RRM (RNA recognition motif) domain. The protein is a member of the cleavage stimulation factor (CSTF) complex that is involved in the 3' end cleavage and polyadenylation of pre-mRNAs. Specifically, this protein binds GU-rich elements within the 3'-untranslated region of mRNAs. [provided by RefSeq, Jul 2008]
Molecular Mass	89.21 kDa
AA Sequence	MAGLTVRDPVAVDRSLRSV FVGNIPYEATEGQLKDIFSEVGPVVSFRLVYDRETGKPK GYGFCEYQDQETALNAMRN LN GREFSGRALRVDNAASEKNKEELKSLGTGAPVIES PYGETISPEDAPESISKAVASLPPEQMFELMKQMKLCVQNSPQEARNM L L QNPQLA YALLQAQVVMRIVDPEIALKILHRQTNIPTLIAGNPQP VHGAGPGSGSNVSMNQNP QAPQAQSLGGMHVNGAPPLMQASMGGVPAPGQM PAAVTGPGPGSLAPGGGMQ AQVGMPGSGPVSMERGGVPMQDPRAAMQRGSLPANVPTPRGLLDAPNDPRGG TLLSVTGEVEPRGYLGPPHQGPPMHHVPGHESRGPPPHEL RGGPLPEPRPLMAEP RGPMLDQRGPPLDGRGGRDPRGIDARGMEARAMEARGLDARGLEARAMEARAME ARAMEARAMEARAMEVRGMEARGMDTRGPVPGPRGPIPSGMQGPSPINMGAVVP

Tel: 1-631-559-9269 1-516-512-3133

Email: info@creative-biomart.com Fax: 1-631-938-8127

45-1 Ramsey Road, Shirley, NY 11967, USA

QGSRQVPVMQGTGMQGASIQGGSQPGGFSPGQNQVTPQDHEKAALIMQVLQLTA
DQIAMLPPEQRQSILILKEQIQKSTGAP

Applications
Enzyme-linked Immunoabsorbent Assay
Western Blot (Recombinant protein)
Antibody Production
Protein Array

Notes
Best use within three months from the date of receipt of this protein.

Storage
Store at -80 centigrade. Aliquot to avoid repeated freezing and thawing.

Storage Buffer
50 mM Tris-HCl, 10 mM reduced Glutathione, pH=8.0 in the elution buffer.

GENE INFORMATION

Gene Name
CSTF2 cleavage stimulation factor, 3 pre-RNA, subunit 2, 64kDa [Homo sapiens]

Official Symbol
CSTF2

Synonyms
CSTF2; cleavage stimulation factor, 3 pre-RNA, subunit 2, 64kDa; cleavage stimulation factor, 3 pre RNA, subunit 2, 64kD; cleavage stimulation factor subunit 2; CF-1 64 kDa subunit; CSTF 64 kDa subunit; betaCstF-64 variant 2; cleavage stimulation factor 64 kDa subunit; CstF-64;

Gene ID
1478

mRNA Refseq
NM_001325

Protein Refseq
NP_001316

 Tel: 1-631-559-9269 1-516-512-3133

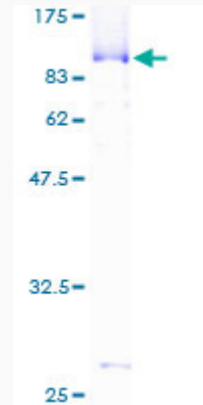
 Email: info@creative-biomart.com  Fax: 1-631-938-8127

 45-1 Ramsey Road, Shirley, NY 11967, USA

MIM 600368

UniProt ID P33240

**Quality Control
Testing:**



12.5% SDS-PAGE Stained with Coomassie Blue.

 Tel: 1-631-559-9269 1-516-512-3133

 Email: info@creative-biomart.com  Fax: 1-631-938-8127

 45-1 Ramsey Road, Shirley, NY 11967, USA