

# Recombinant Full Length Human CSTF2 Protein, C-Flag-tagged

**Cat. No.** CSTF2-267HFL    **Lot. No.** (See product label)

## SPECIFICATION

<b>Product Overview</b>	Recombinant Full Length Human CSTF2 Protein, fused to Flag-tag at C-terminus, was expressed in Mammalian cells.
<b>Species</b>	Human
<b>Source</b>	Mammalian Cells
<b>Description</b>	This gene encodes a nuclear protein with an RRM (RNA recognition motif) domain. The protein is a member of the cleavage stimulation factor (CSTF) complex that is involved in the 3' end cleavage and polyadenylation of pre-mRNAs. Specifically, this protein binds GU-rich elements within the 3'-untranslated region of mRNAs.
<b>Form</b>	25 mM Tris HCl, pH 7.3, 100 mM glycine, 10% glycerol.
<b>Molecular Mass</b>	60.8 kDa
<b>AA Sequence</b>	MAGLTVRDPVDRSLRSVFGNIPYEATEEQLKDIFSEVGPVVSFRLVYDRETGKPK GYGFCEYQDQETA LSAMRNLNREFSGRALRVDNAASEKNKEELKSLGTGAPVIE SPYGETISPEDAPESISKAVASLPPEQM FELMKQMKLCVQNSPQEARNMLLQNPQL AYALLQAQVVMRIVDPEIALKILHRQTNIPTLIAGNPQPVHG AGPGSGSNVSMNQQN PQAPQAQSLGGMHVNGAPPLMQASMQGGVPAPGQMPAAVTGPGPGSLAPGGGM QA QVGMPGSGPVSMERGGVPMQDPRAAMQRGSLPANVPTPRGLLDAPNDPRG GTLLSVTGEVEPRGYLGPP HQGPPMHVPGHESRGPPPHELRGGPLPEPRPLMA EPRGPMLDQRGPPLDGRGGRDPRGIDARGMEARAM EARGLDARGLEARAMEAR

 Tel: 1-631-559-9269    1-516-512-3133

 Email: [info@creative-biomart.com](mailto:info@creative-biomart.com)     Fax: 1-631-938-8127

 45-1 Ramsey Road, Shirley, NY 11967, USA

AMEARAMEARAMEARAMEVRGMEARGMDTRGPVPGPRGPIPSGMQGPSPINM G  
 AVVPQGSRQVPVMQGTGMQGASIQGGSQPGGFSPGQNQVTPQDHEKAALIMQVL  
 QLTADQIAMLPPEQR  
 QSILILKEIQKSTGAPTRTRPLEQKLISEEDLAANDILDYKDDDDKV

<b>Purity</b>	> 80% as determined by SDS-PAGE and Coomassie blue staining.
<b>Stability</b>	Stable for 12 months from the date of receipt of the product under proper storage and handling conditions. Avoid repeated freeze-thaw cycles.
<b>Storage</b>	Store at -80 centigrade.
<b>Concentration</b>	>50 ug/mL as determined by microplate BCA method.
<b>Preparation</b>	Recombinant protein was captured through anti-DDK affinity column followed by conventional chromatography steps.
<b>Full Length</b>	Full L.

## GENE INFORMATION

<b>Gene Name</b>	<a href="#">CSTF2 cleavage stimulation factor subunit 2 [ Homo sapiens (human) ]</a>
<b>Official Symbol</b>	<a href="#">CSTF2</a>
<b>Synonyms</b>	CstF-64
<b>Gene ID</b>	<a href="#">1478</a>
<b>mRNA Refseq</b>	<a href="#">NM_001325.3</a>

 Tel: 1-631-559-9269 1-516-512-3133

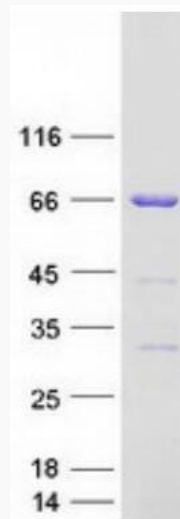
 Email: [info@creative-biomart.com](mailto:info@creative-biomart.com)  Fax: 1-631-938-8127

 45-1 Ramsey Road, Shirley, NY 11967, USA

**Protein Refseq** NP\_001316.1

**MIM** 300907

**UniProt ID** P33240



Coomassie blue staining of purified CSTF2 protein.

 Tel: 1-631-559-9269 1-516-512-3133

 Email: [info@creative-biomart.com](mailto:info@creative-biomart.com)  Fax: 1-631-938-8127

 45-1 Ramsey Road, Shirley, NY 11967, USA