

# Recombinant Human CSTF2 Protein, Myc/DDK-tagged, C13 and N15-labeled

**Cat. No.** CSTF2-3908H    **Lot. No.** (See product label)

## SPECIFICATION

<b>Product Overview</b>	CSTF2 MS Standard C13 and N15-labeled recombinant protein (NP_001316) with a C-terminal MYC/DDK tag, was expressed in HEK293 cells.
<b>Species</b>	Human
<b>Source</b>	HEK293
<b>Description</b>	This gene encodes a nuclear protein with an RRM (RNA recognition motif) domain. The protein is a member of the cleavage stimulation factor (CSTF) complex that is involved in the 3' end cleavage and polyadenylation of pre-mRNAs. Specifically, this protein binds GU-rich elements within the 3'-untranslated region of mRNAs.
<b>Molecular Mass</b>	61 kDa
<b>AA Sequence</b>	MAGLTVRDPVDRSLRSV FVGNIPYEATEEQLKDIFSEVGPVVSFRLVYDRETGKPK GYGFCEYQDQETALSAMRNLNGREFSGRALRVDNAASEKNKEELKSLGTGAPVIES PYGETISPEDAPESISKAVASLPPEQMFELMKQMKLCVQNSPQEARNMLLQNPQLA YALLQAQVVMRIVDPEIALKILHRQTNIPTLIAGNPQPVHGAGPGSGSNVSMNQQNP QAPQAQSLGGMHVNGAPPLMQASMQGGVPAPGQMPAAVTGPGPGSLAPGGGMQ AQVGMPGSGPVSMERGGVPMQDPRAAMQRGSLPANVPTPRGLLDAPNDPRGG TLLSVTGEVEPRGYLGPPHQGPPMHHVPGHESRGPPPHELGGPLPEPRPLMAEP RGPMLDQRGPPLDGRGGRDPRGIDARGMEARAMEARGLDARGLEARAMEARAME ARAMEARAMEARAMEVRGMEARGMDTRGPVPGPRGPIPSGMQGPSPINMGAVVP

 Tel: 1-631-559-9269    1-516-512-3133

 Email: [info@creative-biomart.com](mailto:info@creative-biomart.com)     Fax: 1-631-938-8127

 45-1 Ramsey Road, Shirley, NY 11967, USA

QGSRQVPVMQGTGMQGASIQGGSQPGGFSPGQNQVTPQDHEKAALIMQVLQLTA  
DQIAMLPPEQRQSILILKEQIQKSTGAPTRTRPLEQKLISEEDLAANDILDYKDDDDKV

**Purity** > 80% as determined by SDS-PAGE and Coomassie blue staining

**Stability** Stable for 3 months from receipt of products under proper storage and handling conditions.

**Storage** Store at -80 centigrade. Avoid repeated freeze-thaw cycles.

**Concentration** 50 µg/mL as determined by BCA

**Storage Buffer** 100 mM glycine, 25 mM Tris-HCl, pH 7.3.

## GENE INFORMATION

**Gene Name** CSTF2 cleavage stimulation factor subunit 2 [ Homo sapiens (human) ]

**Official Symbol** CSTF2

**Synonyms** CSTF2; cleavage stimulation factor, 3 pre-RNA, subunit 2, 64kDa; cleavage stimulation factor, 3 pre RNA, subunit 2, 64kD; cleavage stimulation factor subunit 2; CF-1 64 kDa subunit; CSTF 64 kDa subunit; betaCstF-64 variant 2; cleavage stimulation factor 64 kDa subunit; CstF-64;

**Gene ID** 1478

**mRNA Refseq** NM\_001325

**Protein Refseq** NP\_001316

 Tel: 1-631-559-9269 1-516-512-3133

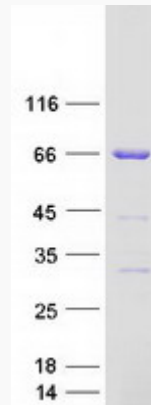
 Email: [info@creative-biomart.com](mailto:info@creative-biomart.com)  Fax: 1-631-938-8127

 45-1 Ramsey Road, Shirley, NY 11967, USA

**MIM** 600368

**UniProt ID** P33240

**SDS-PAGE**



 Tel: 1-631-559-9269 1-516-512-3133

 Email: [info@creative-biomart.com](mailto:info@creative-biomart.com)  Fax: 1-631-938-8127

 45-1 Ramsey Road, Shirley, NY 11967, USA