

Recombinant Human CSTF2T Protein, GST-tagged

Cat. No. CSTF2T-2043H **Lot. No.** (See product label)

SPECIFICATION

Product Overview	Human CSTF2T full-length ORF (NP_056050.1, 1 a.a. - 616 a.a.) recombinant protein with GST-tag at N-terminal.
Species	Human
Source	Wheat Germ
Description	CSTF2T (Cleavage Stimulation Factor Subunit 2 Tau Variant) is a Protein Coding gene. Among its related pathways are mRNA Splicing - Major Pathway and Gene Expression. GO annotations related to this gene include nucleic acid binding and RNA binding. An important paralog of this gene is CSTF2.
Molecular Mass	90.8 kDa
AA Sequence	MSSLAVRDPAMDRSLRSVFGNIPYEATEEQLKDIFSEVGSVVSFRLVYDRETGKPK GYGFCEYQDQETALSAMRNLNGREFSGRALRVDNAASEKNKEELKSLGPAAPIIDS PYGDPIDPEDAPESITRAVASLPPEQMFELMKQMKLCVQNSHQEARNMMLLQNPQLA YALLQAQVVMRIMDPEIALKILHRKIHVTPLIPGKSQSVSVSGPGPGPGPLCPGPNV LLNQQNPPAPQPQHLARRPVKDIPPLMQTPIQGGIPAPGPIAAVPGAGPGSLTPGG AMQPQLGMPGVGPVPLERGVQMSDPRAPRGPVTPGGLPPRGLLDAPNDPR GGTLISVTGEVEPRGYLGPPHQGPPMHHASGHDTGRPSSHEMRGGPLGDPRLIG EPRGPMIDQRGLPMDGRGGRDSRAMETRAMETEVLTRVMERRGMETCAMETRG MEARGMDARGLEMGRPVPSSRGPMTGGIQGPGPINIGAGGPPQGPQVPGISGVG NPGAGMQGTGIQGTGMQGAGIQGGGMQGAGIQGVSIIQGGGIQGGGIQGASKQGG

 Tel: 1-631-559-9269 1-516-512-3133

 Email: info@creative-biomart.com  Fax: 1-631-938-8127

 45-1 Ramsey Road, Shirley, NY 11967, USA

SQPSSFSPGQSQVTPQDQEKAALIMQVLQLTADQIAMLPPEQRQSILILKEQIQKSTG
AS

Applications
Enzyme-linked Immunoabsorbent Assay
Western Blot (Recombinant protein)
Antibody Production
Protein Array

Notes
Best use within three months from the date of receipt of this protein.

Storage
Store at -80 centigrade. Aliquot to avoid repeated freezing and thawing.

Storage Buffer
50 mM Tris-HCl, 10 mM reduced Glutathione, pH=8.0 in the elution buffer.

GENE INFORMATION

Gene Name
CSTF2T cleavage stimulation factor, 3 pre-RNA, subunit 2, 64kDa, tau variant [Homo sapiens]

Official Symbol
CSTF2T

Synonyms
CSTF2T; cleavage stimulation factor, 3 pre-RNA, subunit 2, 64kDa, tau variant; cleavage stimulation factor subunit 2 tau variant; CstF 64T; DKFZp434C1013; KIAA0689; tauCstF-64; CF-1 64 kDa subunit tau; CSTF 64 kDa subunit tau; cleavage stimulation factor subunit 2 tau; cleavage stimulation factor 64 kDa subunit tau; CstF-64T;

Gene ID
23283

mRNA Refseq
NM_015235

 Tel: 1-631-559-9269 1-516-512-3133

 Email: info@creative-biomart.com  Fax: 1-631-938-8127

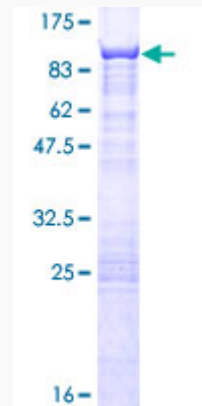
 45-1 Ramsey Road, Shirley, NY 11967, USA

Protein Refseq NP_056050

MIM 611968

UniProt ID Q9H0L4

**Quality Control
Testing:**



12.5% SDS-PAGE Stained with Coomassie Blue.

 Tel: 1-631-559-9269 1-516-512-3133

 Email: info@creative-biomart.com  Fax: 1-631-938-8127

 45-1 Ramsey Road, Shirley, NY 11967, USA