

Recombinant Human CSTF2T Protein, Myc/DDK-tagged, C13 and N15-labeled

Cat. No. CSTF2T-3111H **Lot. No.** (See product label)

SPECIFICATION

Product Overview	CSTF2T MS Standard C13 and N15-labeled recombinant protein (NP_056050) with a C-terminal MYC/DDK tag, was expressed in HEK293 cells.
Species	Human
Source	HEK293
Description	May play a significant role in AAUAAA-independent mRNA polyadenylation in germ cells. Directly involved in the binding to pre-mRNAs.
Molecular Mass	64.5 kDa
AA Sequence	<p>MSSLAVRDPAMDRSLRSVFGNIPYEATEEQLKDIFSEVGSVVSFRLVYDRETGKPK GYGFCEYQDQETALSAMRNLNGREFSGRALRVDNAASEKNKEELKSLGPAAPIIDS PYGDPIDPEDAPESITRAVASLPPEQMFELMKQMKLCVQNSHQEARNMLLQNPQLA YALLQAQVVMRIMDPEIALKILHRKIHVTPLIPGKSQSVSVSGPGPGPGPLCPGPNV LLNQQNPPAPQPQHLARRPVKDIPPLMQTPIQGGIPAPGPIAAVPGAGPGSLTPGG AMQPQLGMPGVGPVPLERGVQMSDPRAPRGPVTPGGLPPRGLLDAPNDPR GGTLLSVTGEVEPRGYLGPPHQGPPMHASGHDTRGPSSHEMRGGPLGDPRLIG EPRGPMIDQRGLPMDGRGGRDSRAMETRAMETEVLTRVMERRGMETCAMETRG MEARGMDARGLEMGRPVPSSRGPMTGGIQQGPGPINIGAGGPPQGPRQVPGISGVG NPGAGMQGTGIQGTGMQGAGIQGGGMQGAGIQGVSIQGGGIQGGGIQGASRQGG SQPSSFSPGQSQVTPQDQEKAALIMQVLQLTADQIAMLPPEQRQSILILKEQIQKSTG</p>

 Tel: 1-631-559-9269 1-516-512-3133

 Email: info@creative-biomart.com  Fax: 1-631-938-8127

 45-1 Ramsey Road, Shirley, NY 11967, USA

ASTRTRPLEQKLISEEDLAANDILDYKDDDDKV

Purity > 80% as determined by SDS-PAGE and Coomassie blue staining

Stability Stable for 3 months from receipt of products under proper storage and handling conditions.

Storage Store at -80 centigrade. Avoid repeated freeze-thaw cycles.

Concentration 50 µg/mL as determined by BCA

Storage Buffer 100 mM glycine, 25 mM Tris-HCl, pH 7.3.

GENE INFORMATION

Gene Name [CSTF2T cleavage stimulation factor subunit 2 tau variant \[Homo sapiens \(human\) \]](#)

Official Symbol [CSTF2T](#)

Synonyms CSTF2T; cleavage stimulation factor, 3 pre-RNA, subunit 2, 64kDa, tau variant; cleavage stimulation factor subunit 2 tau variant; CstF 64T; DKFZp434C1013; KIAA0689; tauCstF-64; CF-1 64 kDa subunit tau; CSTF 64 kDa subunit tau; cleavage stimulation factor subunit 2 tau; cleavage stimulation factor 64 kDa subunit tau; CstF-64T;

Gene ID [23283](#)

mRNA Refseq [NM_015235](#)

Protein Refseq [NP_056050](#)

 Tel: 1-631-559-9269 1-516-512-3133

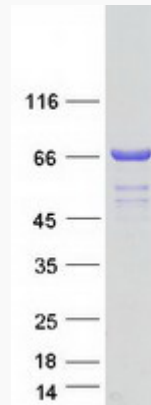
 Email: info@creative-biomart.com  Fax: 1-631-938-8127

 45-1 Ramsey Road, Shirley, NY 11967, USA

MIM 611968

UniProt ID Q9H0L4

SDS-PAGE



 Tel: 1-631-559-9269 1-516-512-3133

 Email: info@creative-biomart.com  Fax: 1-631-938-8127

 45-1 Ramsey Road, Shirley, NY 11967, USA