

Recombinant Human CTAG1A Protein (1-180 aa), His-tagged

Cat. No. CTAG1A-1371H Lot. No. (See product label)

SPECIFICATION

Product Overview	Recombinant Human CTAG1A Protein (1-180 aa) is produced by Yeast expression system. This protein is fused with a 6xHis tag at the N-terminal. Research Area: Cancer. Protein Description: Full Length.
Species	Human
Source	Yeast
ProteinLength	1-180 aa
Form	Tris-based buffer,50% glycerol
Molecular Mass	20.0 kDa
AA Sequence	MQAEGRGTGGSTGDADGPGGGIPDGPGGNAGGGPEAGATGGRGPRGAGAARA SGPGGGAPRGPHGGAASGLNGCCRCGARGPESRLLEFYLAMPFATPMEAELARR SLAQDAPPLPVPGVLLKEFTVSGNILTIRLTAADHRQLQLSISSCLQQLSLLMWITQCF LPVFLAQPPSGQRR
Purity	> 90% as determined by SDS-PAGE.
Notes	Repeated freezing and thawing is not recommended. Store working aliquots at 4 centigrade for up to one week.
Storage	The shelf life is related to many factors, storage state, buffer ingredients, storage

 Tel: 1-631-559-9269 1-516-512-3133

 Email: info@creative-biomart.com  Fax: 1-631-938-8127

 45-1 Ramsey Road, Shirley, NY 11967, USA

temperature and the stability of the protein itself. Generally, the shelf life of liquid form is 6 months at -20 centigrade/-80 centigrade. The shelf life of lyophilized form is 12 months at -20 centigrade/-80 centigrade.

Concentration A hardcopy of COA with reconstitution instruction is sent along with the products.

GENE INFORMATION

Gene Name CTAG1A cancer/testis antigen 1A [Homo sapiens (human)]

Official Symbol CTAG1A

Synonyms ESO1; CT6.1; LAGE-2; LAGE2A; NY-ESO-1;

Gene ID 246100

mRNA Refseq NM_139250

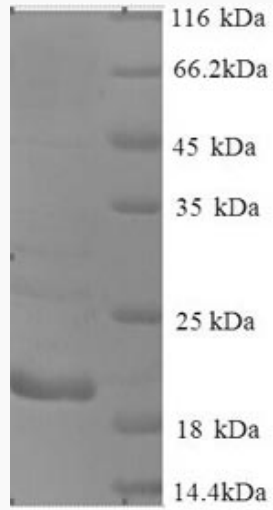
Protein Refseq NP_640343

UniProt ID P78358

 Tel: 1-631-559-9269 1-516-512-3133

 Email: info@creative-biomart.com  Fax: 1-631-938-8127

 45-1 Ramsey Road, Shirley, NY 11967, USA



(Tris-Glycine gel) Discontinuous SDS-PAGE (reduced) with 5% enrichment gel and 15% separation gel.

 Tel: 1-631-559-9269 1-516-512-3133

 Email: info@creative-biomart.com  Fax: 1-631-938-8127

 45-1 Ramsey Road, Shirley, NY 11967, USA