

Recombinant Human CTAG1A Protein (Met1-Arg180), N-SUMO tagged

Cat. No. CTAG1A-2072H Lot. No. (See product label)

SPECIFICATION

Product Overview	Recombinant human CTAG1A/NY-ESO-1/LAGE-2 (Met1-Arg180) fused with N-SUMO tag was expressed in E. coli.
Species	Human
Source	E.coli
ProteinLength	Met1-Arg180
Form	Lyophilized powder/frozen liquid
Molecular Mass	17.99 kDa
Purity	>90% as determined by SDS-PAGE
Notes	For research use only.
Storage	Use a manual defrost freezer and avoid repeated freeze thaw cycles. Store at 2 to 8 centigrade for one week. Store at -20 to -80 centigrade for twelve months from the date of receipt.
Storage Buffer	0.01M PBS, pH 7.4, 0.02% NLS
Reconstitution	Reconstitute in sterile water for a stock solution.

 Tel: 1-631-559-9269 1-516-512-3133

 Email: info@creative-biomart.com  Fax: 1-631-938-8127

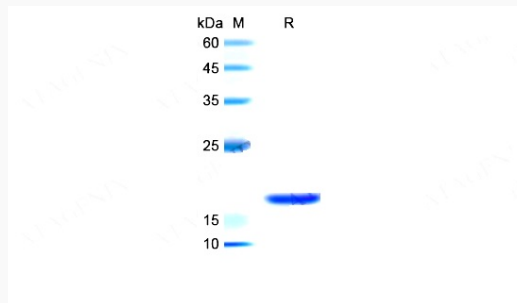
 45-1 Ramsey Road, Shirley, NY 11967, USA

Shipping They are shipped out with dry ice/blue ice unless customers require otherwise.

GENE INFORMATION

Gene Name	CTAG1A cancer/testis antigen 1A [Homo sapiens (human)]
Official Symbol	CTAG1A
Synonyms	CTAG1A; cancer/testis antigen 1A; ESO1; CT6.1; LAGE-2; LAGE2A; NY-ESO-1;
Gene ID	246100
mRNA Refseq	NM_139250
Protein Refseq	NP_640343
MIM	300657
UniProt ID	P78358

SDS-PAGE



Tel: 1-631-559-9269 1-516-512-3133

Email: info@creative-biomart.com Fax: 1-631-938-8127

45-1 Ramsey Road, Shirley, NY 11967, USA