

# Recombinant Human CTAG1A Protein, Myc/DDK-tagged, C13 and N15-labeled

Cat. No. CTAG1A-4933H Lot. No. (See product label)

## SPECIFICATION

<b>Product Overview</b>	CTAG1A MS Standard C13 and N15-labeled recombinant protein (NP_640343) with a C-terminal MYC/DDK tag, was expressed in HEK293 cells.
<b>Species</b>	Human
<b>Source</b>	HEK293
<b>Description</b>	The protein encoded by this gene is a tumor cell antigen found in various types of cancers, which makes it a good candidate for a cancer vaccine. This gene is also highly expressed in normal ovary and testis tissues. An identical copy of this gene is found on the same chromosome.
<b>Molecular Mass</b>	18 kDa
<b>AA Sequence</b>	MQAEGRGTGGSTGDADGPGGGIPDGPGGNAGGPGGEAGATGGRGPRGAGAARA SGPGGGAPRGPHGGAASGLNGCCRCGARGPESRLLEFYLAMPFATPMEAEELARR SLAQDAPPLPVPGVLLKEFTVSGNILTIRLTAADHRQLQLSISSCLQQLSLLMWITQCF LPVFLAQPPSGQRRTRTRPLEQKLISEEDLAANDILDYKDDDDKV
<b>Purity</b>	> 80% as determined by SDS-PAGE and Coomassie blue staining
<b>Stability</b>	Stable for 3 months from receipt of products under proper storage and handling conditions.

 Tel: 1-631-559-9269 1-516-512-3133

 Email: [info@creative-biomart.com](mailto:info@creative-biomart.com)  Fax: 1-631-938-8127

 45-1 Ramsey Road, Shirley, NY 11967, USA

**Storage** Store at -80 centigrade. Avoid repeated freeze-thaw cycles.

**Concentration** 50 µg/mL as determined by BCA

**Storage Buffer** 100 mM glycine, 25 mM Tris-HCl, pH 7.3.

## GENE INFORMATION

**Gene Name** CTAG1A cancer/testis antigen 1A [ Homo sapiens (human) ]

**Official Symbol** CTAG1A

**Synonyms**

CTAG1A; cancer/testis antigen 1A; ESO1; CT6.1; LAGE-2; LAGE2A; NY-ESO-1; cancer/testis antigen 1; New York Esophageal Squamous Cell Carcinoma 1; autoimmunogenic cancer/testis antigen NY-ESO-1; cancer/testis antigen 1-A; cancer/testis antigen 6.1; I antigen family member 2

**Gene ID** 246100

**mRNA Refseq** NM\_139250

**Protein Refseq** NP\_640343

**MIM** 300657

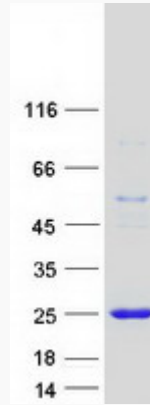
**UniProt ID** P78358

 Tel: 1-631-559-9269 1-516-512-3133

 Email: [info@creative-biomart.com](mailto:info@creative-biomart.com)  Fax: 1-631-938-8127

 45-1 Ramsey Road, Shirley, NY 11967, USA

**SDS-PAGE**



 Tel: 1-631-559-9269 1-516-512-3133

 Email: [info@creative-biomart.com](mailto:info@creative-biomart.com)  Fax: 1-631-938-8127

 45-1 Ramsey Road, Shirley, NY 11967, USA