

Recombinant Human CTAG2 Protein, MYC/DDK-tagged, C13 and N15-labeled

Cat. No. CTAG2-146H **Lot. No.** (See product label)

SPECIFICATION

Product Overview	CTAG2 MS Standard C13 and N15-labeled recombinant protein (NP_758965) with a C-terminal MYC/DDK tag, was expressed in HEK293 cells.
Species	Human
Source	HEK293
Description	<p>This gene encodes an autoimmunogenic tumor antigen that belongs to the ESO/LAGE family of cancer-testis antigens. This protein is expressed in a wide array of cancers including melanoma, breast cancer, bladder cancer and prostate cancer.</p> <p>This protein is also expressed in normal testis tissue. An alternative open reading frame product of this gene has been described in PMID:10399963. This alternate protein, termed CAMEL, is a tumor antigen that is recognized by melanoma-specific cytotoxic T-lymphocytes. Alternate splicing results in multiple transcript variants.</p>
Molecular Mass	18.3 kDa
AA Sequence	<p>MQAEGRGTGGSTGDADGPGGGIPDGPGGNAGGPGEAGATGGRGPRGAGAARA SGPRGGAPRGP HGG AASAQDGRCPGARRPDSR LLELHITMPFSSPMEAE LVRRIL SRDAAPLPRPGAVLKDF TVSGNLLFIRLTAADHRQLQLSISSCLQQLSLLMWITQCFL PVFLAQAPSGQRRTTRTRPLEQKLISEEDLAANDILDYKDDDDKV</p>
Purity	> 80% as determined by SDS-PAGE and Coomassie blue staining

 Tel: 1-631-559-9269 1-516-512-3133

 Email: info@creative-biomart.com  Fax: 1-631-938-8127

 45-1 Ramsey Road, Shirley, NY 11967, USA

Stability	Stable for 3 months from receipt of products under proper storage and handling conditions.
Storage	Store at -80 centigrade. Avoid repeated freeze-thaw cycles.
Concentration	50 µg/mL as determined by BCA
Storage Buffer	100 mM glycine, 25 mM Tris-HCl, pH 7.3.

GENE INFORMATION

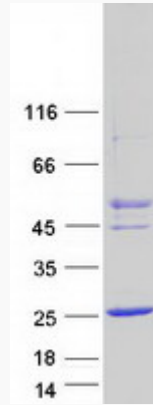
Gene Name	CTAG2 cancer/testis antigen 2 [Homo sapiens (human)]
Official Symbol	CTAG2
Synonyms	CTAG2; cancer/testis antigen 2; CAMEL; CT2; CT6.2; CT6.2a; CT6.2b; ESO2; LAGE-1; LAGE2B; cancer/testis antigen 2; CTL-recognized antigen on melanoma; LAGE-1a protein; autoimmunogenic cancer/testis antigen NY-ESO-2; cancer/testis antigen 6.2; cancer/testis antigen family 6, member 2a; cancer/testis antigen family 6, member 2b; I antigen family member 1
Gene ID	30848
mRNA Refseq	NM_172377
Protein Refseq	NP_758965
MIM	300396
UniProt ID	O75638

 Tel: 1-631-559-9269 1-516-512-3133

 Email: info@creative-biomart.com  Fax: 1-631-938-8127

 45-1 Ramsey Road, Shirley, NY 11967, USA

SDS-PAGE



 Tel: 1-631-559-9269 1-516-512-3133

 Email: info@creative-biomart.com  Fax: 1-631-938-8127

 45-1 Ramsey Road, Shirley, NY 11967, USA