

Recombinant Human CTAG2 Protein (1-210 aa), His-sumostar-tagged

Cat. No. CTAG2-2471H Lot. No. (See product label)

SPECIFICATION

Product Overview	Recombinant Human CTAG2 Protein (1-210 aa) is produced by Yeast expression system. This protein is fused with a 6xHis-sumostar tag at the N-terminal. Protein Description: Full Length.
Species	Human
Source	Yeast
ProteinLength	1-210 aa
Form	Tris-based buffer,50% glycerol
Molecular Mass	37.1 kDa
AA Sequence	MQAEGQGTGGSTGDADGPGGPGIPDGPGGNAGGPGEAGATGGRGPRGAGAARA SGPRGGAPRPHGGAASAQDGRCPGARRPDSRLLQLHITMPFSSPMEAEVRRRI LSRDAAPLPRPGAVLKDFTVSGNLLFMSVRDQDREGAGRMRVVGWGLGSASPEG QKARDL RTPKHKVSEQRPGTPGPPPPEGAQGDGCRGVAFNVMFSAPHI
Purity	> 85% as determined by SDS-PAGE.
Notes	Repeated freezing and thawing is not recommended. Store working aliquots at 4 centigrade for up to one week.

 Tel: 1-631-559-9269 1-516-512-3133

 Email: info@creative-biomart.com  Fax: 1-631-938-8127

 45-1 Ramsey Road, Shirley, NY 11967, USA

Storage

The shelf life is related to many factors, storage state, buffer ingredients, storage temperature and the stability of the protein itself. Generally, the shelf life of liquid form is 6 months at -20 centigrade/-80 centigrade. The shelf life of lyophilized form is 12 months at -20 centigrade/-80 centigrade.

Concentration

A hardcopy of COA will be sent along with the products. Please refer to it for detailed information.

GENE INFORMATION

Gene Name

CTAG2 cancer/testis antigen 2 [Homo sapiens]

Official Symbol

CTAG2

Synonyms

CTAG2; CAMEL; member 2a; member 2b; CT6.2a; CT6.2b; ESO2; LAGE 1; LAGE 1a; LAGE 1a protein; LAGE 1b; LAGE1; MGC3803; MGC138724; LAGE-1a protein; CT2; CT6.2; LAGE-1; LAGE2B;

Gene ID

30848

mRNA Refseq

NM_020994

Protein Refseq

NP_066274

MIM

300396

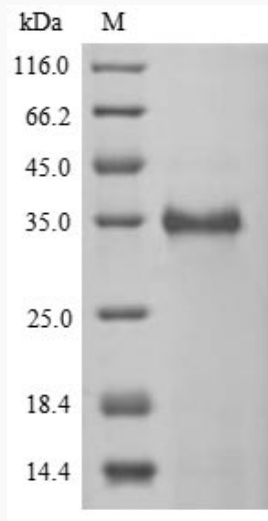
UniProt ID

O75638

 Tel: 1-631-559-9269 1-516-512-3133

 Email: info@creative-biomart.com  Fax: 1-631-938-8127

 45-1 Ramsey Road, Shirley, NY 11967, USA



(Tris-Glycine gel) Discontinuous SDS-PAGE (reduced) with 5% enrichment gel and 15% separation gel.

 Tel: 1-631-559-9269 1-516-512-3133

 Email: info@creative-biomart.com  Fax: 1-631-938-8127

 45-1 Ramsey Road, Shirley, NY 11967, USA