

# Recombinant Human C-terminal Binding Protein 1

Cat. No. CTBP1-2027H Lot. No. (See product label)

## SPECIFICATION

**Product Overview** Recombinant human CtBP1 was expressed in *E. coli* and purified by using conventional chromatography techniques. MW = 47.5 kDa (440aa).

**Species** Human

**Source** E.coli

**Description** C-terminal-binding protein 1 isoform 1, also known as CtBP1, is expressed from embryo to adult. This protein binds to the C-terminus of adenovirus E1A. It is a cellular phosphoprotein that associates with various proteins and functions as a corepressor of transcription. Also, CtBP1 associates in complexes with histone deacetylases (HDAC), the G9a histone methyltransferase, and LSD1 histone demethylase illustrating its role in transcriptional repression.

**Sequences Of Amino Acids**

MGSSHLLNKG LPLGVRPPIM NGPLHPRPLV ALLDGRDCTV EMPILKDVAT  
 VAFCDAAQSTQ EIHEKVLNEA VGALMYHTIT LTREDLEKFK ALRIIVRIGS  
 GFDNIDIKSA GDLGIAVCNV PAASVEETAD STLCHILNLY RRATWLHQAL  
 REGTRVQSVE QIREVASGAA RIRGETLGII GLGRVGGQAVA LRAKAFGFNV  
 LFYDPYLSDG VERALGLQRV STLQDLLFHS DCVTLHCGLN EHNHHLINDF  
 TVKQMRQGAF LVNTARGGLV DEKALAQALK EGRIRGAALD VHESEPFSSFS  
 QGPLKDAPNL ICTPHAAWYS EQASIEMREE AAREIRRAIT GRIPDSLKNC  
 VNKDHLTAAT HWASMDPAVV HPELNGAAYR YPPGVVGVAP TGIPAAVEGI  
 VPSAMSLSHG LPPVAHPPHA PSPGQTVKPE ADRDHASDQL.

 Tel: 1-631-559-9269 1-516-512-3133

 Email: [info@creative-biomart.com](mailto:info@creative-biomart.com)  Fax: 1-631-938-8127

 45-1 Ramsey Road, Shirley, NY 11967, USA

<b>Purity</b>	> 90% by SDS – PAGE.
<b>Form</b>	Liquid. In 20mM Tris-HCl buffer (pH8.0) containing 100mM NaCl, 10% glycerol.
<b>Concentration</b>	1 mg/ml (determined by Bradford assay).
<b>Storage</b>	Can be stored at +4°C short term (1-2 weeks). For long term storage, aliquot and store at -20°C or -70°C. Avoid repeated freezing and thawing cycles.

## GENE INFORMATION

<b>Gene Name</b>	CTBP1 C-terminal binding protein 1 [ Homo sapiens ]
<b>Synonyms</b>	CTBP1; C-terminal binding protein 1; BARS; MGC104684; brefeldin A-ribosylated substrate; C-terminal-binding protein 1; CtBP1; EC 1.1.1.-; CTBP
<b>Gene ID</b>	1487
<b>mRNA Refseq</b>	NM_001012614
<b>Protein Refseq</b>	NP_001012632
<b>MIM</b>	602618
<b>UniProt ID</b>	Q13363
<b>Chromosome Location</b>	4p16
<b>Pathway</b>	Chronic myeloid leukemia; Notch signaling pathway; Pathways in cancer; Wnt signaling pathway

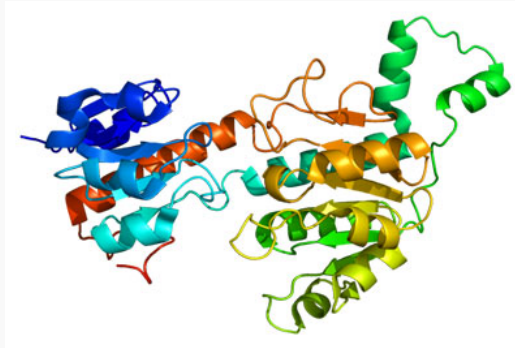
 Tel: 1-631-559-9269 1-516-512-3133


 Email: [info@creative-biomart.com](mailto:info@creative-biomart.com)  Fax: 1-631-938-8127

 45-1 Ramsey Road, Shirley, NY 11967, USA


**Function**

NAD or NADH binding; cofactor binding; oxidoreductase activity; oxidoreductase activity, acting on the CH-OH group of donors, NAD or NADP as acceptor; protein C-terminus binding; protein binding; protein domain specific binding; transcription factor activity; transcription factor binding; transcription repressor activity

**PDB rendering based on 1hku.**

 Tel: 1-631-559-9269 1-516-512-3133

 Email: [info@creative-biomart.com](mailto:info@creative-biomart.com)  Fax: 1-631-938-8127

 45-1 Ramsey Road, Shirley, NY 11967, USA