

Recombinant Human CTBP1 Protein, GST-tagged

Cat. No. CTBP1-2053H Lot. No. (See product label)

SPECIFICATION

Product Overview	Human CTBP1 full-length ORF (AAH53320, 1 a.a. - 429 a.a.) recombinant protein with GST-tag at N-terminal.
Species	Human
Source	Wheat Germ
Description	This gene encodes a protein that binds to the C-terminus of adenovirus E1A proteins. This phosphoprotein is a transcriptional repressor and may play a role during cellular proliferation. This protein and the product of a second closely related gene, CTBP2, can dimerize. Both proteins can also interact with a polycomb group protein complex which participates in regulation of gene expression during development. Alternative splicing of transcripts from this gene results in multiple transcript variants. [provided by RefSeq, Jul 2008]
Molecular Mass	72.93 kDa
AA Sequence	MSGVRPPIMNGPLHPRPLVALLDGRDCTVEMPILKDVATVAFCD AQSTQEIHEKVLN EAVGALMYHTITLTREDLEKFKALRIIVRIGSGFDNIDIKSAGDLGIAVCNVPAASVEET ADSTLCHILNLYRRATWLHQALREGTRVQSVEQIREVASGAARIRGETLGIIGLGRVG QAVALRAKAFGFNVLFYDPYLSGVERALGLQRVSTLQDLLFHSDCVTLHCGLNEH NHHLINDFTVKQMRQGAFLVNTARGGLVDEKALAQALKEGRIRGAALDVHESEPF SF SQGPLKDAPNLICTPHAAWYSEQASIEMREEAAREIRRAITGRIPDSLKNCVNKDHLT AATHWASMDPAVVHPELN GAAYRYPPGVVGVAPTGIPAAVEGIVPSAMSLSHGLPP

 Tel: 1-631-559-9269 1-516-512-3133

 Email: info@creative-biomart.com  Fax: 1-631-938-8127

 45-1 Ramsey Road, Shirley, NY 11967, USA

VAHPPHAPSPGQTVKPEADRDHASDQL

Applications

Enzyme-linked Immunoabsorbent Assay
 Western Blot (Recombinant protein)
 Antibody Production
 Protein Array

Notes

Best use within three months from the date of receipt of this protein.

Storage

Store at -80 centigrade. Aliquot to avoid repeated freezing and thawing.

Storage Buffer

50 mM Tris-HCl, 10 mM reduced Glutathione, pH=8.0 in the elution buffer.

GENE INFORMATION

Gene Name

CTBP1 C-terminal binding protein 1 [Homo sapiens]

Official Symbol

CTBP1

Synonyms

CTBP1; C-terminal binding protein 1; C-terminal-binding protein 1; BARS; brefeldin A ribosylated substrate; brefeldin A-ribosylated substrate; MGC104684;

Gene ID

1487

mRNA Refseq

NM_001012614

Protein Refseq

NP_001012632

MIM

602618

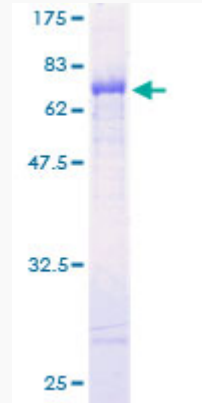
UniProt ID

Q13363

 Tel: 1-631-559-9269 1-516-512-3133

 Email: info@creative-biomart.com  Fax: 1-631-938-8127

 45-1 Ramsey Road, Shirley, NY 11967, USA



Quality Control

Testing:

12.5% SDS-PAGE Stained with Coomassie Blue.

 Tel: 1-631-559-9269 1-516-512-3133

 Email: info@creative-biomart.com  Fax: 1-631-938-8127

 45-1 Ramsey Road, Shirley, NY 11967, USA