

# Recombinant Full Length Human CTBP1 Protein, C-Flag-tagged

**Cat. No.** CTBP1-448HFL    **Lot. No.** (See product label)

## SPECIFICATION

<b>Product Overview</b>	Recombinant Full Length Human CTBP1 Protein, fused to Flag-tag at C-terminus, was expressed in Mammalian cells.
<b>Species</b>	Human
<b>Source</b>	Mammalian Cells
<b>Description</b>	This gene encodes a protein that binds to the C-terminus of adenovirus E1A proteins. This phosphoprotein is a transcriptional repressor and may play a role during cellular proliferation. This protein and the product of a second closely related gene, CTBP2, can dimerize. Both proteins can also interact with a polycomb group protein complex which participates in regulation of gene expression during development. Alternative splicing of transcripts from this gene results in multiple transcript variants.
<b>Form</b>	25 mM Tris HCl, pH 7.3, 100 mM glycine, 10% glycerol.
<b>Molecular Mass</b>	47.4 kDa
<b>AA Sequence</b>	MGSSHLLNKGLPLGVRPPIMNGPLHPRPLVALLDGRDCTVEMPILKDVATVAFCDAAQ STQEIHEKVLNEA VGALMYHTITLTREDLEKFKALRIIVRIGSGFDNIDIKSAGDLGIAV CNVPAASVEETADSTLCHILNLY RRATWLHQALREGTRVQSVEQIREVASGAARIR GETLGIIGLGRVGGQAVALRAKAFGFNVLFYDPYLSDG VERALGLQRVSTLQDLLFHS DCVTLHCGLNEHNHHLINDFTVKQMRQGAFLVNTARGGLVDEKALAQALK EGRIRG AALDVHESEPLSFSQGPLKDAPNLICTPHAAWYSEQASIEMREEAAREIRRAITGRIP

 Tel: 1-631-559-9269    1-516-512-3133

 Email: [info@creative-biomart.com](mailto:info@creative-biomart.com)     Fax: 1-631-938-8127

 45-1 Ramsey Road, Shirley, NY 11967, USA

DSLKNC VNKDHLTAATHWASMDPAVVHPELNGAAYRYPPGVVGVAPTGIPAAVEGI  
 VPSAMSLSHGLPPVAHPPHA  
 PSPGQTVKPEADRDHASDQLTRTRPLEQKLISEEDLAANDILDYKDDDDKV

**Purity** > 80% as determined by SDS-PAGE and Coomassie blue staining.

**Stability** Stable for 12 months from the date of receipt of the product under proper storage and handling conditions. Avoid repeated freeze-thaw cycles.

**Storage** Store at -80 centigrade.

**Concentration** >50 ug/mL as determined by microplate BCA method.

**Preparation** Recombinant protein was captured through anti-DDK affinity column followed by conventional chromatography steps.

**Protein Pathways** Chronic myeloid leukemia, Notch signaling pathway, Pathways in cancer, Wnt signaling pathway

**Full Length** Full L.

## GENE INFORMATION

**Gene Name** CTBP1 C-terminal binding protein 1 [ Homo sapiens (human) ]

**Official Symbol** CTBP1

**Synonyms** BARS; HADDTS

**Gene ID** 1487

 Tel: 1-631-559-9269 1-516-512-3133

 Email: [info@creative-biomart.com](mailto:info@creative-biomart.com)  Fax: 1-631-938-8127

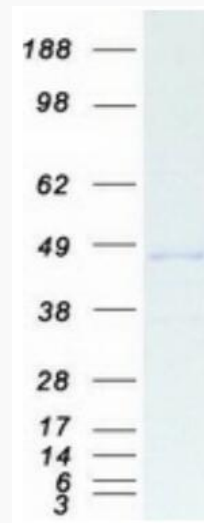
 45-1 Ramsey Road, Shirley, NY 11967, USA

mRNA Refseq [NM\\_001328.3](#)

Protein Refseq [NP\\_001319.1](#)

MIM [602618](#)

UniProt ID [Q13363](#)



Coomassie blue staining of purified CTBP1 protein.

 Tel: 1-631-559-9269 1-516-512-3133

 Email: [info@creative-biomart.com](mailto:info@creative-biomart.com)  Fax: 1-631-938-8127

 45-1 Ramsey Road, Shirley, NY 11967, USA