

Recombinant Human CTBP1 Protein, Myc/DDK-tagged, C13 and N15-labeled

Cat. No. CTBP1-6132H Lot. No. (See product label)

SPECIFICATION

Product Overview

CTBP1 MS Standard C13 and N15-labeled recombinant protein (NP_001012632) with a C-terminal MYC/DDK tag, was expressed in HEK293 cells.

Species

Human

Source

HEK293

Description

This gene encodes a protein that binds to the C-terminus of adenovirus E1A proteins. This phosphoprotein is a transcriptional repressor and may play a role during cellular proliferation. This protein and the product of a second closely related gene, CTBP2, can dimerize. Both proteins can also interact with a polycomb group protein complex which participates in regulation of gene expression during development. Alternative splicing of transcripts from this gene results in multiple transcript variants.

Molecular Mass

46.4 kDa

AA Sequence

MSGVRPPIMNGPLHPRPLVALLDGRDCTVEMPILKDVATVAFCD AQSTQEIHEKVLN
EAVGALMYHTITLTREDLEKFKALRIIVRIGSGFDNIDIKSAGDLGIAVCN VPAASVEET
ADSTLCHILNLYRRATWLHQALREGTRVQSVEQIREVASGAARIRGETLGIIGLGRVG
QAVALRAKAFGFNVLFYDPYLSDGVERALGLQRVSTLQDLLFHSDCVTLHCGLNEH
NHHLINDFTVKQMRQGAFLVNTARGGLVDEKALAQALKEGRIRGAALDVHESEPF SF
SQGPLKDAPNLICTPHAAWYSEQASIEMREEAAREIRRAITGRIPDSLKNCV NKDHLT
AATHWASMDPAVVHPELN GAAYRYPPGVVGVAPTGIPAAVEGIVPSAMSLSHGLPP

Tel: 1-631-559-9269 1-516-512-3133

Email: info@creative-biomart.com Fax: 1-631-938-8127

45-1 Ramsey Road, Shirley, NY 11967, USA

VAHPPHAPSPGQTVKPEADRDHASDQLTRTRPLEQKLISEEDLAANDILDYKDDDDK
V

Purity > 80% as determined by SDS-PAGE and Coomassie blue staining

Stability Stable for 3 months from receipt of products under proper storage and handling conditions.

Storage Store at -80 centigrade. Avoid repeated freeze-thaw cycles.

Concentration 50 µg/mL as determined by BCA

Storage Buffer 100 mM glycine, 25 mM Tris-HCl, pH 7.3.

GENE INFORMATION

Gene Name CTBP1 C-terminal binding protein 1 [Homo sapiens (human)]

Official Symbol CTBP1

Synonyms CTBP1; C-terminal binding protein 1; C-terminal-binding protein 1; BARS; brefeldin A ribosylated substrate; brefeldin A-ribosylated substrate; MGC104684;

Gene ID 1487

mRNA Refseq NM_001012614

Protein Refseq NP_001012632

MIM 602618

 Tel: 1-631-559-9269 1-516-512-3133

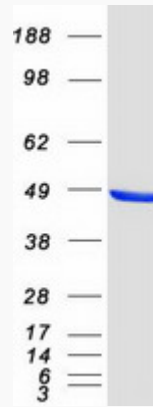
 Email: info@creative-biomart.com  Fax: 1-631-938-8127

 45-1 Ramsey Road, Shirley, NY 11967, USA

UniProt ID

Q13363

SDS-PAGE



 Tel: 1-631-559-9269 1-516-512-3133

 Email: info@creative-biomart.com  Fax: 1-631-938-8127

 45-1 Ramsey Road, Shirley, NY 11967, USA