

## Recombinant Human CTBP2 Protein, GST-tagged

Cat. No. CTBP2-2054H Lot. No. (See product label)

### SPECIFICATION

<b>Product Overview</b>	Human CTBP2 full-length ORF ( AAH02486, 1 a.a. - 445 a.a.) recombinant protein with GST-tag at N-terminal.
<b>Species</b>	Human
<b>Source</b>	Wheat Germ
<b>Description</b>	This gene produces alternative transcripts encoding two distinct proteins. One protein is a transcriptional repressor, while the other isoform is a major component of specialized synapses known as synaptic ribbons. Both proteins contain a NAD <sup>+</sup> binding domain similar to NAD <sup>+</sup> -dependent 2-hydroxyacid dehydrogenases. A portion of the 3' untranslated region was used to map this gene to chromosome 21q21.3; however, it was noted that similar loci elsewhere in the genome are likely. Blast analysis shows that this gene is present on chromosome 10. Several transcript variants encoding two different isoforms have been found for this gene. [provided by RefSeq, Feb 2014]
<b>Molecular Mass</b>	74.69 kDa
<b>AA Sequence</b>	MALVDKHKVKRQRLDRICEGIRPQIMNGPLHPRPLVALLDGRDCTVEMPILKDLATV AFCDAQSTQEIHEKVLNEAVGAMMYHTITLTREDLEKFKALRVIVRIGSGYDNVDIKA AGELGIAVCNIPSAAVEETADSTICHILNLYRRNTWLYQALREGTRVQSVEQIREVAS GAARIRGETLGLIGFGRTGQAVAVRAKAFGFSVIFYDPYQLDGIERSLGVQRVYTLQ DLLYQSDCVSLHCNLNEHNHHLINDFTIKQMRQGAFLVNAARGGLVDEKALAQALKE

 Tel: 1-631-559-9269 1-516-512-3133

 Email: [info@creative-biomart.com](mailto:info@creative-biomart.com)  Fax: 1-631-938-8127

 45-1 Ramsey Road, Shirley, NY 11967, USA

GRIRGAALDVHESEPFSSFAQGPLKDAPNLICTPHTAWYSEQASLEMREAAATEIRRAI  
 TGRIPESLRNCVNKEFFVTSAPWSVIDQQAIHPELNGATYRYPPGIVGVAPGGLPAA  
 MEGIIPGGIPVTHNLPTVAHPSQAPSPNQPTKHGDNREHPNEQ

<b>Applications</b>	Enzyme-linked Immunoabsorbent Assay Western Blot (Recombinant protein) Antibody Production Protein Array
<b>Notes</b>	Best use within three months from the date of receipt of this protein.
<b>Storage</b>	Store at -80 centigrade. Aliquot to avoid repeated freezing and thawing.
<b>Storage Buffer</b>	50 mM Tris-HCl, 10 mM reduced Glutathione, pH=8.0 in the elution buffer.

## GENE INFORMATION

<b>Gene Name</b>	<a href="#">CTBP2 C-terminal binding protein 2 [ Homo sapiens ]</a>
<b>Official Symbol</b>	<a href="#">CTBP2</a>
<b>Synonyms</b>	CTBP2; C-terminal binding protein 2; C-terminal-binding protein 2; ribeye;
<b>Gene ID</b>	<a href="#">1488</a>
<b>mRNA Refseq</b>	<a href="#">NM_001083914</a>
<b>Protein Refseq</b>	<a href="#">NP_001077383</a>
<b>MIM</b>	<a href="#">602619</a>

 Tel: 1-631-559-9269 1-516-512-3133

 Email: [info@creative-biomart.com](mailto:info@creative-biomart.com)  Fax: 1-631-938-8127

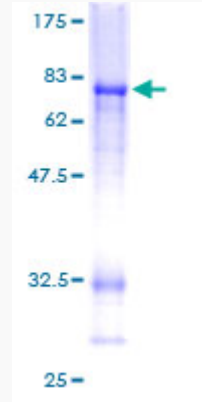
 45-1 Ramsey Road, Shirley, NY 11967, USA

UniProt ID

P56545

Quality Control

Testing:



12.5% SDS-PAGE Stained with Coomassie Blue.

 Tel: 1-631-559-9269 1-516-512-3133

 Email: [info@creative-biomart.com](mailto:info@creative-biomart.com)  Fax: 1-631-938-8127

 45-1 Ramsey Road, Shirley, NY 11967, USA