

## Recombinant Human CTBP2 Protein, Myc/DDK-tagged, C13 and N15-labeled

Cat. No. CTBP2-4647H Lot. No. (See product label)

### SPECIFICATION

#### Product Overview

CTBP2 MS Standard C13 and N15-labeled recombinant protein (NP\_001077383) with a C-terminal MYC/DDK tag, was expressed in HEK293 cells.

#### Species

Human

#### Source

HEK293

#### Description

This gene produces alternative transcripts encoding two distinct proteins. One protein is a transcriptional repressor, while the other isoform is a major component of specialized synapses known as synaptic ribbons. Both proteins contain a NAD<sup>+</sup> binding domain similar to NAD<sup>+</sup>-dependent 2-hydroxyacid dehydrogenases. A portion of the 3' untranslated region was used to map this gene to chromosome 21q21.3; however, it was noted that similar loci elsewhere in the genome are likely. Blast analysis shows that this gene is present on chromosome 10. Several transcript variants encoding two different isoforms have been found for this gene.

#### Molecular Mass

48.8 kDa

#### AA Sequence

MALVDKHKVKRQRLDRICEGIRPQIMNGPLHPRPLVALLDGRDCTVEMPILKDLATV  
 AFCDAQSTQEIHEKVLNEAVGAMMYHTITLTREDLEKFKALRVIVRIGSGYDNVDIKA  
 AGELGIAVCNIPSAAVEETADSTICHILNLYRRNTWLYQALREGTRVQSVEQIREVAS  
 GAARIRGETLGLIGFGRTGQAVAVRAKAFGFSVIFYDPYLDGIERSLGVQRVYTLQ  
 DLLYQSDCVSLHCNLNEHNHHLINDFTIKQMRQGAFLVNAARGGLVDEKALAQALKE

 Tel: 1-631-559-9269 1-516-512-3133

 Email: [info@creative-biomart.com](mailto:info@creative-biomart.com)  Fax: 1-631-938-8127

 45-1 Ramsey Road, Shirley, NY 11967, USA

GRIRGAALDVHESEPFSSFAQGPLKDAPNLICTPHTAWYSEQASLEMREAAATEIRRAI  
 TGRIPESLRNCVNKEFFVTSAPWSVIDQQAIHPELNGATYRYPPGIVGVAPGGLPAA  
 MEGIIPGGIPVTHNLPTVAHPSQAPSPNQPTKHGDNREHPNEQTRTRPLEQKLISEE  
 DLAANDILDYKDDDDKV

**Purity** > 80% as determined by SDS-PAGE and Coomassie blue staining

**Stability** Stable for 3 months from receipt of products under proper storage and handling conditions.

**Storage** Store at -80 centigrade. Avoid repeated freeze-thaw cycles.

**Concentration** 50 µg/mL as determined by BCA

**Storage Buffer** 100 mM glycine, 25 mM Tris-HCl, pH 7.3.

## GENE INFORMATION

**Gene Name** CTBP2 C-terminal binding protein 2 [ Homo sapiens (human) ]

**Official Symbol** CTBP2

**Synonyms** CTBP2; C-terminal binding protein 2; C-terminal-binding protein 2; ribeye;

**Gene ID** 1488

**mRNA Refseq** NM\_001083914

**Protein Refseq** NP\_001077383

**MIM** 602619

 Tel: 1-631-559-9269 1-516-512-3133

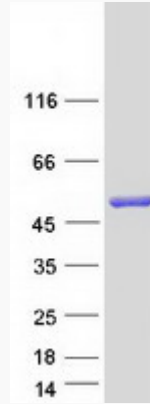
 Email: [info@creative-biomart.com](mailto:info@creative-biomart.com)  Fax: 1-631-938-8127

 45-1 Ramsey Road, Shirley, NY 11967, USA

UniProt ID

P56545

SDS-PAGE



 Tel: 1-631-559-9269 1-516-512-3133

 Email: [info@creative-biomart.com](mailto:info@creative-biomart.com)  Fax: 1-631-938-8127

 45-1 Ramsey Road, Shirley, NY 11967, USA