

Recombinant Human CTBP2 Protein, Myc/DDK-tagged, C13 and N15-labeled

Cat. No. CTBP2-6071H Lot. No. (See product label)

SPECIFICATION

Product Overview

CTBP2 MS Standard C13 and N15-labeled recombinant protein (NP_001320) with a C-terminal MYC/DDK tag, was expressed in HEK293 cells.

Species

Human

Source

HEK293

Description

This gene produces alternative transcripts encoding two distinct proteins. One protein is a transcriptional repressor, while the other isoform is a major component of specialized synapses known as synaptic ribbons. Both proteins contain a NAD⁺ binding domain similar to NAD⁺-dependent 2-hydroxyacid dehydrogenases. A portion of the 3' untranslated region was used to map this gene to chromosome 21q21.3; however, it was noted that similar loci elsewhere in the genome are likely. Blast analysis shows that this gene is present on chromosome 10. Several transcript variants encoding two different isoforms have been found for this gene.

Molecular Mass

48.8 kDa

AA Sequence

MALVDKHKVKRQRLDRICEGIRPQIMNGPLHPRPLVALLDGRDCTVEMPILKDLATV
 AFCDAQSTQEIHEKVLNEAVGAMMYHTITLTREDLEKFKALRVVIRIGSGYDNVDIKA
 AGELGIAVCNIPSAAVEETADSTICHILNLYRRNTWLYQALREGTRVQSVEQIREVAS
 GAARIRGETLGLIGFGRTGQAVAVRAKAFGFSVIFYDPYLQDGIERSLGVQRVYTLQ
 DLLYQSDCVSLHCNLNEHNHHLINDFTIKQMRQGAFLVNAARGGLVDEKALAQALKE

 Tel: 1-631-559-9269 1-516-512-3133

 Email: info@creative-biomart.com  Fax: 1-631-938-8127

 45-1 Ramsey Road, Shirley, NY 11967, USA

GRIRGAALDVHESEPFSSFAQGPLKDAPNLICTPHTAWYSEQASLEMREAAATEIRRAI
 TGRIPESLRNCVNKEFFVTSAPWSVIDQQAIHPELNGATYRYPPGIVGVAPGGGLPAA
 MEGIIPGGIPVTHNLPTVAHPSQAPSPNQPTKHGDNREHPNEQTRTRPLEQKLISEE
 DLAANDILDYKDDDDKV

Purity > 80% as determined by SDS-PAGE and Coomassie blue staining

Stability Stable for 3 months from receipt of products under proper storage and handling conditions.

Storage Store at -80 centigrade. Avoid repeated freeze-thaw cycles.

Concentration 50 µg/mL as determined by BCA

Storage Buffer 100 mM glycine, 25 mM Tris-HCl, pH 7.3.

GENE INFORMATION

Gene Name CTBP2 C-terminal binding protein 2 [Homo sapiens (human)]

Official Symbol CTBP2

Synonyms CTBP2; C-terminal binding protein 2; C-terminal-binding protein 2; ribeye;

Gene ID 1488

mRNA Refseq NM_001329

Protein Refseq NP_001320

MIM 602619

 Tel: 1-631-559-9269 1-516-512-3133

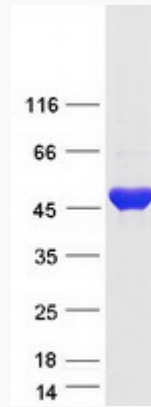
 Email: info@creative-biomart.com  Fax: 1-631-938-8127

 45-1 Ramsey Road, Shirley, NY 11967, USA

UniProt ID

P56545

SDS-PAGE



 Tel: 1-631-559-9269 1-516-512-3133

 Email: info@creative-biomart.com  Fax: 1-631-938-8127

 45-1 Ramsey Road, Shirley, NY 11967, USA