

Recombinant Full Length Human CTBP2 Protein, C-Flag-tagged

Cat. No. CTBP2-673HFL **Lot. No.** (See product label)

SPECIFICATION

Product Overview	Recombinant Full Length Human CTBP2 Protein, fused to Flag-tag at C-terminus, was expressed in Mammalian cells.
Species	Human
Source	Mammalian Cells
Description	This gene produces alternative transcripts encoding two distinct proteins. One protein is a transcriptional repressor, while the other isoform is a major component of specialized synapses known as synaptic ribbons. Both proteins contain a NAD ⁺ binding domain similar to NAD ⁺ -dependent 2-hydroxyacid dehydrogenases. A portion of the 3' untranslated region was used to map this gene to chromosome 21q21.3; however, it was noted that similar loci elsewhere in the genome are likely. Blast analysis shows that this gene is present on chromosome 10. Several transcript variants encoding two different isoforms have been found for this gene.
Form	25 mM Tris HCl, pH 7.3, 100 mM glycine, 10% glycerol.
Molecular Mass	48.8 kDa
AA Sequence	MALVDKHKVKRQRLDRICEGIRPQIMNGPLHPRPLVALLDGRDCTVEMPILKDLATV AFCDQAQSTQEIHE KVLNEAVGAMMYHTITLTREDLEKFKALRVIVRIGSGYDNVDIKA AGELGIAVCNIPSAAVEETADSTIC HILNLYRRNTWLYQALREGTRVQSVEQIREVAS GAARIRGETLGLIGFGRTGQAVAVRAKAFGFSVIFYD PYLQDGIERSLGVQRVYTLQ

 Tel: 1-631-559-9269 1-516-512-3133

 Email: info@creative-biomart.com  Fax: 1-631-938-8127

 45-1 Ramsey Road, Shirley, NY 11967, USA

DLLYQSDCVSLHCNLNEHNHHLINDFTIKQMRQGAFLVNAARGGLVDEKA LAQALK
 EGRIRGAALDVHESEPFSAQGPLKDAPNLICTPHTAWYSEQASLEMREAAATEIRR
 AITGRIP ESLRNCVNKEFFVTSAPWSVIDQQAIHPELNGATYRYPPGIVGVAPGGPL
 AAMEGIIPGGIPVTHNLPTV
 AHPSQAPSPNQPTKHGDNREHPNEQTRTRPLEQKLISEEDLAANDILDYKDDDDKV

Purity > 80% as determined by SDS-PAGE and Coomassie blue staining.

Stability Stable for 12 months from the date of receipt of the product under proper storage and handling conditions. Avoid repeated freeze-thaw cycles.

Storage Store at -80 centigrade.

Concentration >50 ug/mL as determined by microplate BCA method.

Preparation Recombinant protein was captured through anti-DDK affinity column followed by conventional chromatography steps.

Protein Families Stem cell - Pluripotency, Stem cell relevant signaling - Wnt Signaling pathway

Protein Pathways Chronic myeloid leukemia, Notch signaling pathway, Pathways in cancer, Wnt signaling pathway

Full Length Full L.

GENE INFORMATION

Gene Name CTBP2 C-terminal binding protein 2 [Homo sapiens (human)]

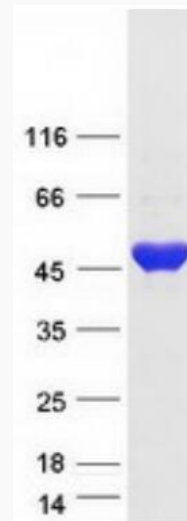
Official Symbol CTBP2

 Tel: 1-631-559-9269 1-516-512-3133

 Email: info@creative-biomart.com  Fax: 1-631-938-8127

 45-1 Ramsey Road, Shirley, NY 11967, USA

Synonyms	C-terminal binding protein 2; OTTHUMP00000020699; OTTHUMP00000020701; ribeye
Gene ID	1488
mRNA Refseq	NM_001329.4
Protein Refseq	NP_001320.1
MIM	602619
UniProt ID	P56545



Coomassie blue staining of purified CTBP2 protein.

 Tel: 1-631-559-9269 1-516-512-3133

 Email: info@creative-biomart.com  Fax: 1-631-938-8127

 45-1 Ramsey Road, Shirley, NY 11967, USA