

# Recombinant Human CTBS Protein, Myc/DDK-tagged, C13 and N15-labeled

**Cat. No.** CTBS-729H    **Lot. No.** (See product label)

## SPECIFICATION

<b>Product Overview</b>	CTBS MS Standard C13 and N15-labeled recombinant protein (NP_004379) with a C-terminal MYC/DDK tag, was expressed in HEK293 cells.
<b>Species</b>	Human
<b>Source</b>	HEK293
<b>Description</b>	Chitobiase is a lysosomal glycosidase involved in degradation of asparagine-linked oligosaccharides on glycoproteins.
<b>Molecular Mass</b>	43.8 kDa
<b>AA Sequence</b>	MSRPQLRRWRLVSSPPSGVPGLALLALLALLALRLAAGTDCPCPEPELCRPIRHHPD FEVFDVGVGQKTWKSVDWSQITTVATFGKYDSELMCYAHSKGARVVLKGDVSLKDII DPAFRASWIAQKLNLAKTQYMDGINIDIEQEVNCLSPEYDALTALVKETTDSFHREIE GSQVTFDVAWSPKNIDRRCYNYTGIADACDFLFVMSYDEQSQIWSEICIAAANAPYN QTLTGYNDYIKMSINPKKLVMGVPWYGDYTCLNLSHDVCTIAKVPFRGAPCSDAA GRQVPYKTIMKQINSSISGNLWDKDRAPYYNYKDPAGHFHQVWYDNPQSISLKAT YIQNYRLRGIGMWNANCLDYSGDAVAKQQTEEMWEVLKPKLLQRTRTRPLEQKLIS EEDLAANDILDYKDDDDKV
<b>Purity</b>	> 80% as determined by SDS-PAGE and Coomassie blue staining
<b>Stability</b>	Stable for 3 months from receipt of products under proper storage and handling

 Tel: 1-631-559-9269    1-516-512-3133

 Email: [info@creative-biomart.com](mailto:info@creative-biomart.com)     Fax: 1-631-938-8127

 45-1 Ramsey Road, Shirley, NY 11967, USA

conditions.

**Storage** Store at -80 centigrade. Avoid repeated freeze-thaw cycles.

**Concentration** 50 µg/mL as determined by BCA

**Storage Buffer** 100 mM glycine, 25 mM Tris-HCl, pH 7.3.

## GENE INFORMATION

**Gene Name** CTBS chitobiase [ Homo sapiens (human) ]

**Official Symbol** CTBS

**Synonyms** CTBS; chitobiase, di-N-acetyl-; CTB; di-N-acetylchitobiase;

**Gene ID** 1486

**mRNA Refseq** NM\_004388

**Protein Refseq** NP\_004379

**MIM** 600873

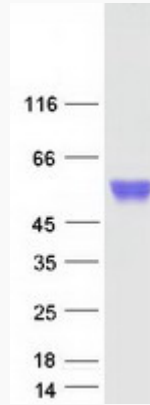
**UniProt ID** Q01459

 Tel: 1-631-559-9269 1-516-512-3133

 Email: [info@creative-biomart.com](mailto:info@creative-biomart.com)  Fax: 1-631-938-8127

 45-1 Ramsey Road, Shirley, NY 11967, USA

**SDS-PAGE**



 Tel: 1-631-559-9269 1-516-512-3133

 Email: [info@creative-biomart.com](mailto:info@creative-biomart.com)  Fax: 1-631-938-8127

 45-1 Ramsey Road, Shirley, NY 11967, USA