

Recombinant Human CTCF Protein (Met1-Ile154), N-His tagged

Cat. No. CTCF-1699H Lot. No. (See product label)

SPECIFICATION

Product Overview	Recombinant human CTCF (Met1-Ile154) fused with N-His tag was expressed in E. coli.
Species	Human
Source	E.coli
ProteinLength	Met1-Ile154
Form	Lyophilized powder/frozen liquid
Molecular Mass	19.24 kDa
Purity	>90% as determined by SDS-PAGE
Notes	For research use only.
Storage	Use a manual defrost freezer and avoid repeated freeze thaw cycles. Store at 2 to 8 centigrade for one week. Store at -20 to -80 centigrade for twelve months from the date of receipt.
Storage Buffer	0.01M PBS, pH 7.4, 0.02% NLS
Reconstitution	Reconstitute in sterile water for a stock solution.

 Tel: 1-631-559-9269 1-516-512-3133

 Email: info@creative-biomart.com  Fax: 1-631-938-8127

 45-1 Ramsey Road, Shirley, NY 11967, USA

Shipping They are shipped out with dry ice/blue ice unless customers require otherwise.

GENE INFORMATION

Gene Name CTCF CCCTC-binding factor (zinc finger protein) [Homo sapiens (human)]

Official Symbol CTCF

Synonyms CTCF; CCCTC-binding factor (zinc finger protein); transcriptional repressor CTCF; 11 zinc finger transcriptional repressor; CTCFL paralog; 11-zinc finger protein;

Gene ID 10664

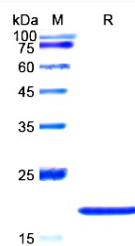
mRNA Refseq NM_001191022

Protein Refseq NP_001177951

MIM 604167

UniProt ID P49711

SDS-PAGE



 Tel: 1-631-559-9269 1-516-512-3133

 Email: info@creative-biomart.com  Fax: 1-631-938-8127

 45-1 Ramsey Road, Shirley, NY 11967, USA