

## Recombinant Mouse CTCFL Protein (1-636 aa), His-tagged

Cat. No. CTCFL-1372M Lot. No. (See product label)

### SPECIFICATION

<b>Product Overview</b>	Recombinant Mouse CTCFL Protein (1-636 aa) is produced by Yeast expression system. This protein is fused with a 6xHis tag at the N-terminal. Protein Description: Full Length.
<b>Species</b>	Mouse
<b>Source</b>	Yeast
<b>ProteinLength</b>	1-636 aa
<b>Description</b>	Testis-specific DNA binding protein responsible for insulator function, nuclear architecture and transcriptional control, which probably acts by recruiting epigenetic chromatin modifiers. Plays a key role in gene imprinting in male germline, by participating in the establishment of differential methylation at the IGF2/H19 imprinted control region (ICR). Directly binds the unmethylated H19 ICR and recruits the PRMT7 methyltransferase, leading to methylate histone H4 'Arg-3' to form H4R3sme2. This probably leads to recruit de novo DNA methyltransferases at these sites. Seems to act as tumor suppressor. In association with DNMT1 and DNMT3B, involved in activation of BAG1 gene expression by binding to its promoter. Required for dimethylation of H3 lysine 4 (H3K4me2) of MYC and BRCA1 promoters.
<b>Form</b>	Tris-based buffer,50% glycerol
<b>Molecular Mass</b>	75.1 kDa

 Tel: 1-631-559-9269 1-516-512-3133

 Email: [info@creative-biomart.com](mailto:info@creative-biomart.com)  Fax: 1-631-938-8127

 45-1 Ramsey Road, Shirley, NY 11967, USA



**AA Sequence**

MAAAEVPVPSGYFTQIKEQKLKPGDLEEEKEEDGVQRVEAQEGVVKEVEAENSCLL  
 LEARAPVESDRRILTLQTVHLESQDVHLQGLGWLSVPHSEELSGTVPEAEGILQLPS  
 VLWLDPEPQLSLQHCVTVSIPEELYPPEELQRIHFHLLRENVLMAEENPELTPDLDES  
 TALKKPEEDEKQQLPPQGETDKREERLLLLLEMKPKKEGKDDEIVLTISHLSLEEQQDP  
 PAANQTSVPGAKAAKPKRRRQTKGKPKQSFQCDTCPFTSSKLSTFNRIHIHSNERP  
 HLCHLCLKAFRTVTLRNHVNTHTGTRPHKCRDCDMAFVTSGELVRHRRYKHTYK  
 PFKCSLCKYASVEASKMKRHIRSHTGERPFQCCQAYASRDSYKLRHMRTHSGE  
 KPYECPTCHVRFTQSGTMKIHIAQKHGENVPKYECPHCATIARKSDLRVHLRNLHS  
 QSPEEMKCRYCPAGFHERYALIQHQRTHKNEKKFKCKQCDYACKQERCLKAHMRM  
 HTGKPFSCCLACNKHFRQKQLLTVHLRKYHDPNFVNLHLCLKCDKRFSRWSNLQR  
 HRKKCDPEHETLAPNKDRRPVTRTQASEGEAGHKEGEPQCPGEQALGHQGEAAG  
 SQSPDHGLTCEIIFNMMDK

**Purity**

> 90% as determined by SDS-PAGE.

**Notes**

Repeated freezing and thawing is not recommended. Store working aliquots at 4 centigrade for up to one week.

**Storage**

The shelf life is related to many factors, storage state, buffer ingredients, storage temperature and the stability of the protein itself. Generally, the shelf life of liquid form is 6 months at -20 centigrade/-80 centigrade. The shelf life of lyophilized form is 12 months at -20 centigrade/-80 centigrade.

**Concentration**

A hardcopy of COA with reconstitution instruction is sent along with the products.

**GENE INFORMATION**

**Gene Name**

Ctcf1 CCCTC-binding factor (zinc finger protein)-like [ *Mus musculus* ]

**Official Symbol**

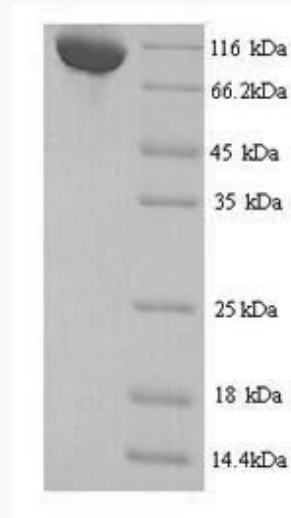
CTCFL

Tel: 1-631-559-9269 1-516-512-3133

Email: [info@creative-biomart.com](mailto:info@creative-biomart.com) Fax: 1-631-938-8127

45-1 Ramsey Road, Shirley, NY 11967, USA

<b>Synonyms</b>	CTCFL; BORIS; CTCF paralog; Boris; RP23-44L6.1; OTTMUSG00000016680;
<b>Gene ID</b>	664799
<b>mRNA Refseq</b>	NM_001081387
<b>Protein Refseq</b>	NP_001074856
<b>UniProt ID</b>	A2APF3



(Tris-Glycine gel) Discontinuous SDS-PAGE (reduced) with 5% enrichment gel and 15% separation gel.

 Tel: 1-631-559-9269 1-516-512-3133

 Email: [info@creative-biomart.com](mailto:info@creative-biomart.com)  Fax: 1-631-938-8127

 45-1 Ramsey Road, Shirley, NY 11967, USA