

## Recombinant Human CTCFL Protein, GST-tagged

Cat. No. CTCFL-2058H Lot. No. (See product label)

### SPECIFICATION

<b>Product Overview</b>	Human CTCFL partial ORF ( NP_542185, 193 a.a. - 293 a.a.) recombinant protein with GST-tag at N-terminal.
<b>Species</b>	Human
<b>Source</b>	Wheat Germ
<b>Description</b>	CCCTC-binding factor (CTCF), an 11-zinc-finger factor involved in gene regulation, utilizes different zinc fingers to bind varying DNA target sites. CTCF forms methylation-sensitive insulators that regulate X-chromosome inactivation. This gene is a paralog of CTCF and appears to be expressed primarily in the cytoplasm of spermatocytes, unlike CTCF which is expressed primarily in the nucleus of somatic cells. CTCF and the protein encoded by this gene are normally expressed in a mutually exclusive pattern that correlates with resetting of methylation marks during male germ cell differentiation. Multiple alternatively spliced transcript variants encoding different isoforms have been found for this gene. [provided by RefSeq, Jun 2012]
<b>Molecular Mass</b>	36.85 kDa
<b>AA Sequence</b>	AERTKEQLFFVETMSGDERSDEIVLTVSNSNVEEQEDQPTAGQADAEKAKSTKNQR KTKGAKGTFHCDVCMFTSSRMSSFNRHMKTHTSEKPHLCHLCLKT
<b>Applications</b>	Enzyme-linked Immunoabsorbent Assay Western Blot (Recombinant protein)

 Tel: 1-631-559-9269 1-516-512-3133

 Email: [info@creative-biomart.com](mailto:info@creative-biomart.com)  Fax: 1-631-938-8127

 45-1 Ramsey Road, Shirley, NY 11967, USA

	Antibody Production Protein Array
<b>Notes</b>	Best use within three months from the date of receipt of this protein.
<b>Storage</b>	Store at -80 centigrade. Aliquot to avoid repeated freezing and thawing.
<b>Storage Buffer</b>	50 mM Tris-HCl, 10 mM reduced Glutathione, pH=8.0 in the elution buffer.
<b>GENE INFORMATION</b>	
<b>Gene Name</b>	CTCF-like protein (zinc finger protein)-like [ Homo sapiens ]
<b>Official Symbol</b>	CTCF
<b>Synonyms</b>	CTCF; CCCTC-binding factor (zinc finger protein)-like; transcriptional repressor CTCF; BORIS; cancer/testis antigen 27; CT27; dJ579F20.2; HMG-1L1; CTCF paralog; CTCF-like protein; BORIS-like protein; zinc finger protein CTCF-T; brother of the regulator of imprinted sites; putative high mobility group protein 1-like 1; putative high mobility group protein B1-like 1; CTCF-T; HMGB1L1; MGC163358; MGC169105; MGC169106;
<b>Gene ID</b>	140690
<b>mRNA Refseq</b>	NM_080618
<b>Protein Refseq</b>	NP_542185
<b>MIM</b>	607022
<b>UniProt ID</b>	Q8NI51

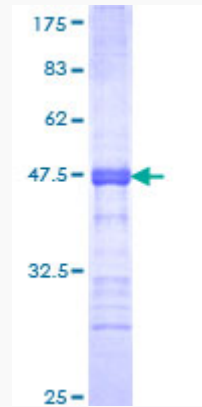
Tel: 1-631-559-9269 1-516-512-3133

Email: [info@creative-biomart.com](mailto:info@creative-biomart.com) Fax: 1-631-938-8127

45-1 Ramsey Road, Shirley, NY 11967, USA

**Quality Control**

**Testing:**



12.5% SDS-PAGE Stained with Coomassie Blue.

 Tel: 1-631-559-9269 1-516-512-3133

 Email: [info@creative-biomart.com](mailto:info@creative-biomart.com)  Fax: 1-631-938-8127

 45-1 Ramsey Road, Shirley, NY 11967, USA