

Recombinant Human CTF1 Protein, GST-tagged

Cat. No. CTF1-2067H Lot. No. (See product label)

SPECIFICATION

Product Overview	Human CTF1 full-length ORF (NP_001321.1, 1 a.a. - 201 a.a.) recombinant protein with GST tag at N-terminal.
Species	Human
Source	Wheat Germ
Description	The protein encoded by this gene is a secreted cytokine that induces cardiac myocyte hypertrophy in vitro. It has been shown to bind and activate the ILST/gp130 receptor. Two transcript variants encoding different isoforms have been found for this gene. [provided by RefSeq, Dec 2008]
Molecular Mass	47.6 kDa
AA Sequence	MSRREGSLEDPQTDSSVSLPHLEAKIRQTHSLAHLTKYAEQLLQEYVQLQGDPFG LPSFSPRLPVAGLSAPAPSHAGLPVHERLRLDAAALAALPPLLDVCCRQAELNPR APRLLRRLEDAARQARALGAAVEALLAALGAANRGPRAEPPAATASAASATGVFPA KVLGLRVCGLYREWLSRTEGDLGQLLPGGSA
Applications	Enzyme-linked Immunoabsorbent Assay Western Blot (Recombinant protein) Antibody Production Protein Array
Notes	Best use within three months from the date of receipt of this protein.

 Tel: 1-631-559-9269 1-516-512-3133

 Email: info@creative-biomart.com  Fax: 1-631-938-8127

 45-1 Ramsey Road, Shirley, NY 11967, USA

Storage Store at -80 centigrade. Aliquot to avoid repeated freezing and thawing.

Storage Buffer 50 mM Tris-HCl, 10 mM reduced Glutathione, pH=8.0 in the elution buffer.

GENE INFORMATION

Gene Name CTF1 cardiotoxin 1 [Homo sapiens]

Official Symbol CTF1

Synonyms CTF1; cardiotoxin 1; cardiotoxin-1; CT 1; CT1; cardiophin 1; CT-1;

Gene ID 1489

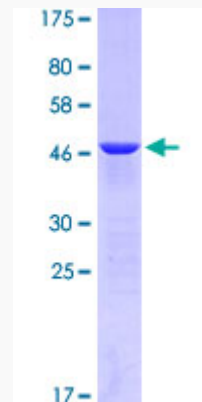
mRNA Refseq NM_001142544

Protein Refseq NP_001136016

MIM 600435

UniProt ID Q16619

Quality Control Testing:



 Tel: 1-631-559-9269 1-516-512-3133

 Email: info@creative-biomart.com  Fax: 1-631-938-8127

 45-1 Ramsey Road, Shirley, NY 11967, USA



12.5% SDS-PAGE Stained with Coomassie Blue

 Tel: 1-631-559-9269 1-516-512-3133

 Email: info@creative-biomart.com  Fax: 1-631-938-8127

 45-1 Ramsey Road, Shirley, NY 11967, USA