

## Active Recombinant Human CTGF protein, His-GST-tagged

Cat. No. CTGF-1287H Lot. No. (See product label)

### SPECIFICATION

<b>Product Overview</b>	Active Recombinant Human CTGF protein(P29279)(27~349 aa), fused with N-terminal His tag and GST tag, was expressed in E.coli.
<b>Species</b>	Human
<b>Source</b>	E.coli
<b>ProteinLength</b>	27-349 aa
<b>Form</b>	Lyophilized from sterile PBS, pH7.4, containing 0.01% SKL, 1mM DTT, 5% Trehalose and Proclin300.
<b>Bio-activity</b>	<p>Connective Tissue Growth Factor (CTGF), also known as CCN2 is a matricellular protein of the CCN family of extracellular matrix-associated heparin-binding proteins. CTGF has important roles in many biological processes, including cell adhesion, migration, proliferation, angiogenesis, skeletal development, and tissue wound repair, and is critically involved in fibrotic disease and several forms of cancers. As CTGF has the function of cell adhesion, we measure the activity of recombinant human CTGF by the ability of the immobilized protein to support the adhesion of Balb/3T3 mouse embryonic fibroblast cell. When <math>5 \times 10^4</math> cells/well are added to different concentrations of recombinant human CTGF coated plates, cells will adhere after 2 hour incubation at 37°C. The adhesion of Balb/3T3 after 2 hour incubation at 37°C observed by inverted microscope. Cell adherent was in a dose dependent manner, the EC50 was 0.6 ug/ml.</p>

 Tel: 1-631-559-9269 1-516-512-3133

 Email: [info@creative-biomart.com](mailto:info@creative-biomart.com)  Fax: 1-631-938-8127

 45-1 Ramsey Road, Shirley, NY 11967, USA

<b>Molecular Mass</b>	65.5kDa
<b>Endotoxin</b>	<1.0EU per 1µg (determined by the LAL method).
<b>Purity</b>	> 80% as determined by SDS-PAGE.
<b>Storage</b>	Avoid repeated freeze/thaw cycles. Store at -20°C for 12 months. Aliquot and store at -80°C for 12 months.
<b>Reconstitution</b>	Reconstitute in 10mM PBS (pH7.4) to a concentration of 0.1-1.0 mg/mL. Do not vortex.

## GENE INFORMATION

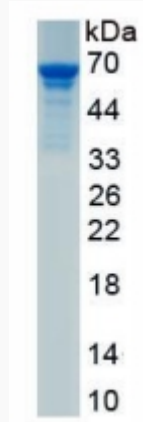
<b>Gene Name</b>	CTGF connective tissue growth factor [ Homo sapiens ]
<b>Official Symbol</b>	CTGF
<b>Synonyms</b>	CTGF; connective tissue growth factor; CCN2; IGFBP8; IBP-8; IGFBP-8; CCN family member 2; IGF-binding protein 8; hypertrophic chondrocyte-specific protein 24; insulin-like growth factor-binding protein 8; NOV2; HCS24; MGC102839;
<b>Gene ID</b>	1490
<b>mRNA Refseq</b>	NM_001901
<b>Protein Refseq</b>	NP_001892
<b>MIM</b>	121009
<b>UniProt ID</b>	P29279

 Tel: 1-631-559-9269 1-516-512-3133

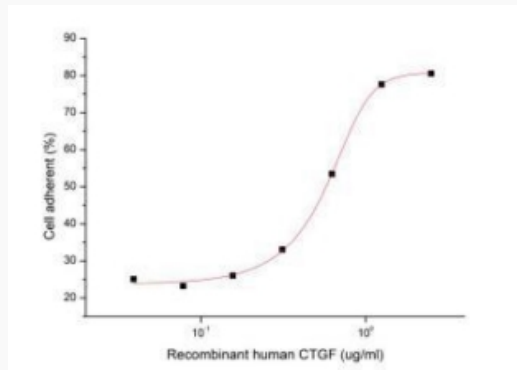
 Email: [info@creative-biomart.com](mailto:info@creative-biomart.com)  Fax: 1-631-938-8127

 45-1 Ramsey Road, Shirley, NY 11967, USA

**SDS-PAGE**



**Activity**



 Tel: 1-631-559-9269 1-516-512-3133

 Email: [info@creative-biomart.com](mailto:info@creative-biomart.com)  Fax: 1-631-938-8127

 45-1 Ramsey Road, Shirley, NY 11967, USA