

Recombinant Human CTGF protein, His-tagged

Cat. No. CTGF-1359H Lot. No. (See product label)

SPECIFICATION

Product Overview	Recombinant Human CTGF protein(Q5M8T4)(Gln27-Ala349), fused with C-terminal His tag, was expressed in HEK293.
Species	Human
Source	C-His
ProteinLength	Gln27-Ala349
Tag	C-His
Form	Supplied as 0.22µm filtered solution in PBS (pH 7.4).
Bio-activity	Immobilized Human CTGF, His Tag at 0.5µg/ml (100µl/well) on the plate. Dose response curve for Anti-CTGF Antibody, hFc Tag with the EC50 of 7.7ng/ml determined by ELISA.
Molecular Mass	The protein has a predicted MW of 36.56 kDa. Due to glycosylation, the protein migrates to 45-60 kDa based on Tris-Bis PAGE result.
Endotoxin	Less than 1EU per µg by the LAL method.
Purity	> 95% as determined by Tris-Bis PAGE; > 95% as determined by HPLC.
Storage	Valid for 12 months from date of receipt when stored at -80°C.;Recommend to aliquot

 Tel: 1-631-559-9269 1-516-512-3133

 Email: info@creative-biomart.com  Fax: 1-631-938-8127

 45-1 Ramsey Road, Shirley, NY 11967, USA

the protein into smaller quantities for optimal storage. Please do not repeated freeze-thaw cycles.

Reconstitution

It is recommended that sterile water be added to the vial to prepare a stock solution of 0.2 ug/ul. Centrifuge the vial at 4°C before opening to recover the entire contents.

GENE INFORMATION

Gene Name [CTGF connective tissue growth factor \[Homo sapiens \]](#)

Official Symbol [CTGF](#)

Synonyms

CTGF; connective tissue growth factor; CCN2; IGFBP8; IBP-8; IGFBP-8; CCN family member 2; IGF-binding protein 8; hypertrophic chondrocyte-specific protein 24; insulin-like growth factor-binding protein 8; NOV2; HCS24; MGC102839;

Gene ID [1490](#)

mRNA Refseq [NM_001901](#)

Protein Refseq [NP_001892](#)

MIM [121009](#)

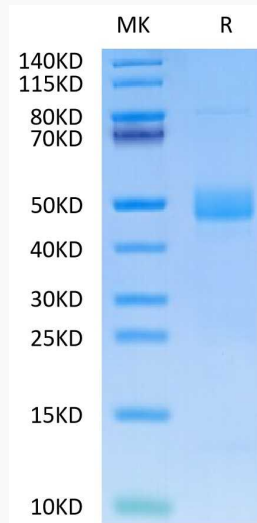
UniProt ID [P29279](#)

 Tel: 1-631-559-9269 1-516-512-3133

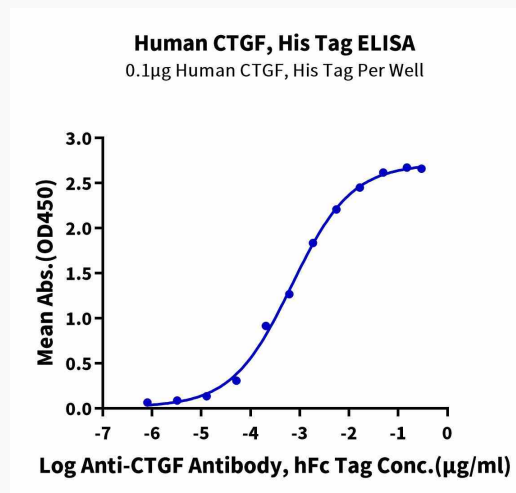
 Email: info@creative-biomart.com  Fax: 1-631-938-8127

 45-1 Ramsey Road, Shirley, NY 11967, USA

Tris-Bis PAGE



ELISA



Tel: 1-631-559-9269 1-516-512-3133

Email: info@creative-biomart.com Fax: 1-631-938-8127

45-1 Ramsey Road, Shirley, NY 11967, USA