

Recombinant Mouse CTGF protein, His-tagged

Cat. No. CTGF-393M Lot. No. (See product label)

SPECIFICATION

Product Overview	Recombinant Mouse CTGF protein (Gln26-Ala348), fused to His tag at C-terminus, was expressed in human 293 cells (HEK293).
Species	Mouse
Source	HEK293
ProteinLength	323
Description	Connective Tissue Growth Factor (CTGF), also known as CCN2, is a member of the CCN (CCN1-6) family of modular extracellular matrix proteins. Like other CCN proteins, mature human CTGF consists of IGF-binding protein domain, a vWF-C domain, a TSP-1 domain, and a cysteine knot heparin-binding domain. CTGF promotes proliferation and differentiation of chondrocytes. Mediates heparin- and divalent cation-dependent cell adhesion in many cell types including fibroblasts, myofibroblasts, endothelial and epithelial cells. Enhances fibroblast growth factor-induced DNA synthesis. Analysis of CCN2 function in vivo has focused primarily on its key role as a mediator of excess ECM synthesis in multiple fibrotic diseases.
Form	Lyophilized from 0.22 um filtered solution in Tris with Potassium glutamate and Arginine, pH7.0, 10% trehalose.
Molecular Mass	The protein has a calculated MW of 37.3 kDa. The protein migrates as 37-40 kDa under reducing (R) condition (SDS-PAGE) due to glycosylation.

 Tel: 1-631-559-9269 1-516-512-3133

 Email: info@creative-biomart.com  Fax: 1-631-938-8127

 45-1 Ramsey Road, Shirley, NY 11967, USA

Endotoxin	Less than 1.0 EU per ug by the LAL method.
Purity	>90% as determined by SDS-PAGE.
Storage	<p>For long term storage, the product should be stored at lyophilized state at -20 centigrade or lower.</p> <p>Please avoid repeated freeze-thaw cycles.</p> <p>This product is stable after storage at:</p> <p>-20 centigrade to -70 centigrade for 12 months in lyophilized state; -70 centigrade for 3 months under sterile conditions after reconstitution.</p>
Reconstitution	It is recommended that sterile water be added to the vial to prepare a stock solution of 0.2 ug/ul. Centrifuge the vial at 4°C before opening to recover the entire contents.

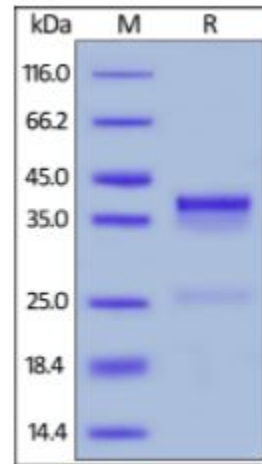
GENE INFORMATION

Gene Name	CTGF
Official Symbol	CTGF
Synonyms	CTGF; connective tissue growth factor; CCN family member 2; fibroblast inducible secreted protein; fibroblast inducible secreted protein; hypertrophic chondrocyte-specific protein 24; hypertrophic chondrocyte-specific gene product 24; Connective tissue growth factor precursor (CTGF) (FISP-12 protein) (Hypertrophic chondrocyte-specific protein 24); Ccn2; Hcs24; Fisp12; fisp-12
Gene ID	14219
mRNA Refseq	NM_010217
Protein Refseq	NP_034347

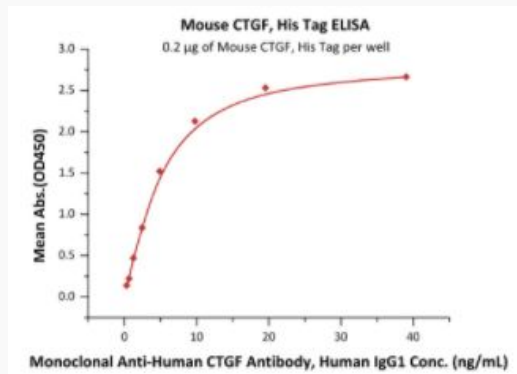
 Tel: 1-631-559-9269 1-516-512-3133

 Email: info@creative-biomart.com  Fax: 1-631-938-8127

 45-1 Ramsey Road, Shirley, NY 11967, USA

UniProt ID
P29268
SDS-PAGE of CTGF-393M


Mouse CTGF, His Tag on SDS-PAGE under reducing (R) condition. The gel was stained overnight with Coomassie Blue. The purity of the protein is greater than 90%.

Bioactivity-ELISA of CTGF-393M


Immobilized Mouse CTGF, His Tag at 2 µg/mL (100 µL/well) can bind Monoclonal Anti-Human CTGF Antibody, Human IgG1 with a linear range of 0.3-5 ng/mL (QC

 Tel: 1-631-559-9269 1-516-512-3133

 Email: info@creative-biomart.com  Fax: 1-631-938-8127

 45-1 Ramsey Road, Shirley, NY 11967, USA



tested).

 Tel: 1-631-559-9269 1-516-512-3133

 Email: info@creative-biomart.com  Fax: 1-631-938-8127

 45-1 Ramsey Road, Shirley, NY 11967, USA