

Recombinant Human CTH Protein, His-tagged

Cat. No. CTH-1288H **Lot. No.** (See product label)

SPECIFICATION

Product Overview	Recombinant Human CTH Protein (Met1-Ser405) with N-His tag was expressed in E. coli.
Species	Human
Source	E.coli
ProteinLength	Met1-Ser405
Description	This gene encodes a cytoplasmic enzyme in the trans-sulfuration pathway that converts cystathione derived from methionine into cysteine. Glutathione synthesis in the liver is dependent upon the availability of cysteine. Mutations in this gene cause cystathioninuria. Alternative splicing of this gene results in three transcript variants encoding different isoforms.
Form	Freeze-dried powder
Molecular Mass	Predicted Molecular Mass: 48.2 kDa Accurate Molecular Mass: \
Purity	> 95%
Applications	Positive Control; Immunogen; SDS-PAGE; WB.
Stability	The thermal stability is described by the loss rate. The loss rate was determined by

 Tel: 1-631-559-9269 1-516-512-3133

 Email: info@creative-biomart.com  Fax: 1-631-938-8127

 45-1 Ramsey Road, Shirley, NY 11967, USA

accelerated thermal degradation test, that is, incubate the protein at 37 centigrade for 48h, and no obvious degradation and precipitation were observed. The loss rate is less than 5% within the expiration date under appropriate storage condition.

Storage

Avoid repeated freeze/thaw cycles. Store at 2-8 centigrade for one month. Aliquot and store at -80 centigrade for 12 months.

Storage Buffer

20mM Tris, 150mM NaCl, pH8.0, containing 1mM EDTA, 1mM DTT, 0.01% SKL, 5% Trehalose and Proclin300.

Reconstitution

Reconstitute in 20mM Tris, 150mM NaCl (pH8.0) to a concentration of 0.1-1.0 mg/mL. Do not vortex.

GENE INFORMATION

Gene Name

CTH cystathionase (cystathionine gamma-lyase) [Homo sapiens (human)]

Official Symbol

CTH

Synonyms

CTH; cystathionase (cystathionine gamma-lyase); cystathionine gamma-lyase; gamma-cystathionase; homoserine deaminase; cysteine desulfhydrase; homoserine dehydratase; cysteine-protein sulfhydrase; MGC9471;

Gene ID

1491

mRNA Refseq

NM_001190463

Protein Refseq

NP_001177392

MIM

607657

 Tel: 1-631-559-9269 1-516-512-3133

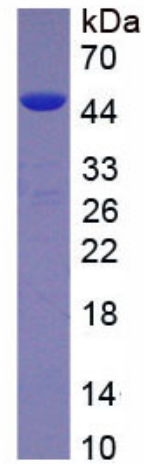
 Email: info@creative-biomart.com  Fax: 1-631-938-8127

 45-1 Ramsey Road, Shirley, NY 11967, USA



UniProt ID

P32929



Tel: 1-631-559-9269 1-516-512-3133

Email: info@creative-biomart.com Fax: 1-631-938-8127

45-1 Ramsey Road, Shirley, NY 11967, USA