

Recombinant Human CTH Protein (Met1-Ser405)

Cat. No. CTH-1867H Lot. No. (See product label)

SPECIFICATION

Product Overview	Recombinant human CTH (Met1-Ser405) without tag was expressed in E. coli.
Species	Human
Source	E.coli
ProteinLength	Met1-Ser405
Form	Lyophilized powder/frozen liquid
Molecular Mass	44.55 kDa
Purity	>90% as determined by SDS-PAGE
Notes	For research use only.
Storage	Use a manual defrost freezer and avoid repeated freeze thaw cycles. Store at 2 to 8 centigrade for one week. Store at -20 to -80 centigrade for twelve months from the date of receipt.
Storage Buffer	Supplied as solution form in PBS or lyophilized from PBS.
Reconstitution	Reconstitute in sterile water for a stock solution.
Shipping	They are shipped out with dry ice/blue ice unless customers require otherwise.

 Tel: 1-631-559-9269 1-516-512-3133

 Email: info@creative-biomart.com  Fax: 1-631-938-8127

 45-1 Ramsey Road, Shirley, NY 11967, USA

GENE INFORMATION

Gene Name	CTH cystathionase (cystathionine gamma-lyase) [Homo sapiens (human)]
Official Symbol	CTH
Synonyms	CTH; cystathionase (cystathionine gamma-lyase); cystathionine gamma-lyase; gamma-cystathionase; homoserine deaminase; cysteine desulfhydrase; homoserine dehydratase; cysteine-protein sulfhydrase; MGC9471;
Gene ID	1491
mRNA Refseq	NM_001190463
Protein Refseq	NP_001177392
MIM	607657
UniProt ID	P32929

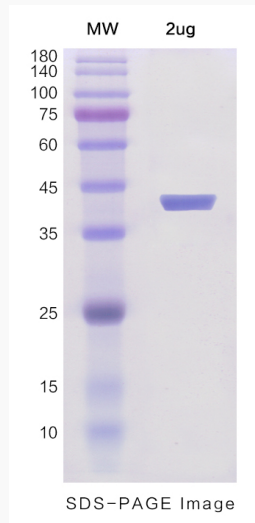
 Tel: 1-631-559-9269 1-516-512-3133

 Email: info@creative-biomart.com  Fax: 1-631-938-8127

 45-1 Ramsey Road, Shirley, NY 11967, USA



SDS-PAGE



Tel: 1-631-559-9269 1-516-512-3133

Email: info@creative-biomart.com Fax: 1-631-938-8127

45-1 Ramsey Road, Shirley, NY 11967, USA