

Recombinant Human CTH Protein, GST-tagged

Cat. No. CTH-2070H **Lot. No.** (See product label)

SPECIFICATION

Product Overview	Human CTH full-length ORF (AAH15807, 1 a.a. - 405 a.a.) recombinant protein with GST-tag at N-terminal.
Species	Human
Source	Wheat Germ
Description	This gene encodes a cytoplasmic enzyme in the trans-sulfuration pathway that converts cystathione derived from methionine into cysteine. Glutathione synthesis in the liver is dependent upon the availability of cysteine. Mutations in this gene cause cystathioninuria. Alternative splicing of this gene results in three transcript variants encoding different isoforms. [provided by RefSeq, Jun 2010]
Molecular Mass	70.07 kDa
AA Sequence	<p> MQEKDASSQGFLPHFQHFATQAIHVGQDPEQWTSRAVVPPISLSTTFKQGAPGQH SGFEYSRSGNPTRNCLEKAVAALDGAKYCLAFASGLAATVTITHLLKAGDQIICMDDV YGGTNRVYFRQVASEFGLKISFVDCSKIKLLEAAITPETKLVWIETPTNPTQKVIDIEGC AHIVHKHGDIIIVDNTFMSPYFQRPLALGADISMYSATKYMNGRSDVVMGLVSVNC ESLHNRLRFLQNSLGAVPSPIDCYLCNRGLKTLHVRMEKHFKNMVAQAQFLESNPW VEKVIYPGLPSHPQHELVKRQCTGCTGMVTFYIKGTLQHAEIFLKNLKLFTLAESLGG FESLAELPAIMTHASVLKNDRDVLGISDTLIRLSVGLLEDEEDLLEDLDQALKAHPPS GSHS </p>
Applications	Enzyme-linked Immunoabsorbent Assay

 Tel: 1-631-559-9269 1-516-512-3133

 Email: info@creative-biomart.com  Fax: 1-631-938-8127

 45-1 Ramsey Road, Shirley, NY 11967, USA

Western Blot (Recombinant protein)
Antibody Production
Protein Array

Notes	Best use within three months from the date of receipt of this protein.
Storage	Store at -80 centigrade. Aliquot to avoid repeated freezing and thawing.
Storage Buffer	50 mM Tris-HCl, 10 mM reduced Glutathione, pH=8.0 in the elution buffer.

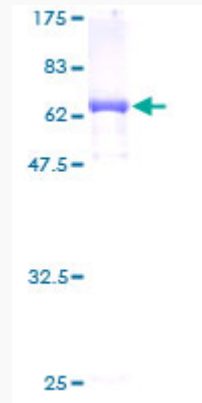
GENE INFORMATION

Gene Name	CTH cystathionase (cystathionine gamma-lyase) [Homo sapiens]
Official Symbol	CTH
Synonyms	CTH; cystathionase (cystathionine gamma-lyase); cystathionine gamma-lyase; gamma-cystathionase; homoserine deaminase; cysteine desulfhydrase; homoserine dehydratase; cysteine-protein sulfhydrase; MGC9471;
Gene ID	1491
mRNA Refseq	NM_001190463
Protein Refseq	NP_001177392
MIM	607657
UniProt ID	P32929

 Tel: 1-631-559-9269 1-516-512-3133

 Email: info@creative-biomart.com  Fax: 1-631-938-8127

 45-1 Ramsey Road, Shirley, NY 11967, USA



Quality Control

Testing:

12.5% SDS-PAGE Stained with Coomassie Blue.

 Tel: 1-631-559-9269 1-516-512-3133

 Email: info@creative-biomart.com  Fax: 1-631-938-8127

 45-1 Ramsey Road, Shirley, NY 11967, USA