

## Recombinant Human CTHRC1 Protein, MBP-tagged

Cat. No. CTHRC1-001H Lot. No. (See product label)

### SPECIFICATION

<b>Product Overview</b>	Recombinant Human CTHRC1 Protein 32-243 aa (full-length) with a MBP tag was expressed in E.coli.
<b>Species</b>	Human
<b>Source</b>	E.coli
<b>ProteinLength</b>	32-243 a.a.
<b>Description</b>	This locus encodes a protein that may play a role in the cellular response to arterial injury through involvement in vascular remodeling. Mutations at this locus have been associated with Barrett esophagus and esophageal adenocarcinoma. Alternatively spliced transcript variants have been described.
<b>Molecular Mass</b>	67.7 kDa
<b>Purity</b>	>90% confirmed by 10% SDS-PAGE stained with Coomassie Blue (CB), immunoblotting with anti-MBP (WB).
<b>Applications</b>	ELISA, WB, Antibody Production, Protein array
<b>Quality Control Test</b>	10% SDS-PAGE stained with Coomassie Blue (CB), immunoblotting with anti-MBP (WB) and peptide fingerprinting by MALDI-TOF mass spectrometry.
<b>Storage</b>	Prior to reconstitution, store the lyophilized protein at 2–8 centigrade. After

 Tel: 1-631-559-9269 1-516-512-3133

 Email: [info@creative-biomart.com](mailto:info@creative-biomart.com)  Fax: 1-631-938-8127

 45-1 Ramsey Road, Shirley, NY 11967, USA

reconstitution, store in working aliquots at -80 centigrade.

**Expiry** All components are stable for 1 year of receipt, if stored properly.

**Storage Buffer** 20mM Tris/HCl pH 8, 0,2M NaCl, 1mM EDTA, 10mM maltose.

**Shipping** Lyophilized at Ambient temperature

## GENE INFORMATION

**Gene Name** CTHRC1 collagen triple helix repeat containing 1 [ Homo sapiens (human) ]

**Official Symbol** CTHRC1

**Synonyms** CTHRC1; collagen triple helix repeat containing 1; collagen triple helix repeat-containing protein 1

**Gene ID** 115908

**mRNA Refseq** NM\_138455

**Protein Refseq** NP\_612464

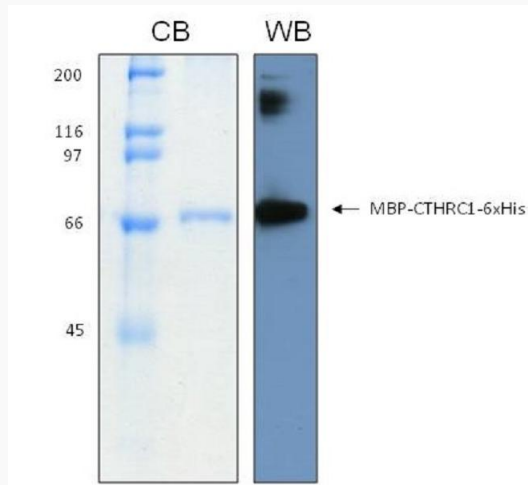
**MIM** 610635

**UniProt ID** Q96CG8

 Tel: 1-631-559-9269 1-516-512-3133

 Email: [info@creative-biomart.com](mailto:info@creative-biomart.com)  Fax: 1-631-938-8127

 45-1 Ramsey Road, Shirley, NY 11967, USA



 Tel: 1-631-559-9269 1-516-512-3133

 Email: [info@creative-biomart.com](mailto:info@creative-biomart.com)  Fax: 1-631-938-8127

 45-1 Ramsey Road, Shirley, NY 11967, USA