

## Recombinant Human CTHRC1 protein, GST-tagged

Cat. No. CTHRC1-28025TH Lot. No. (See product label)

### SPECIFICATION

<b>Product Overview</b>	Recombinant Human CTHRC1(32 a.a. - 141 a.a.) fused with GST tag at N-terminal was expressed in Wheat Germ.
<b>Species</b>	Human
<b>Source</b>	Wheat Germ
<b>ProteinLength</b>	32-141 a.a.
<b>Description</b>	This locus encodes a protein that may play a role in the cellular response to arterial injury through involvement in vascular remodeling. Mutations at this locus have been associated with Barrett esophagus and esophageal adenocarcinoma. Alternatively spliced transcript variants have been described.
<b>Form</b>	50 mM Tris-HCl, 10 mM reduced Glutathione, pH=8.0 in the elution buffer.
<b>Molecular Mass</b>	37.62 kDa
<b>AA Sequence</b>	EIPKKGKQKAQLRQREVVDLYNGMCLQGVPGRDGSPPGANGIPGTPGIPGRDGF KGEKGECLRESFEESWTPNYKQCSWSSLNYGIDLGKIAECTFTKMRSNSALRVLF
<b>Applications</b>	Enzyme-linked Immunoabsorbent Assay; Western Blot (Recombinant protein); Antibody Production; Protein Array
<b>Notes</b>	Best use within three months from the date of receipt of this protein.

 Tel: 1-631-559-9269 1-516-512-3133

 Email: [info@creative-biomart.com](mailto:info@creative-biomart.com)  Fax: 1-631-938-8127

 45-1 Ramsey Road, Shirley, NY 11967, USA

**Storage** Store at -80 centigrade. Aliquot to avoid repeated freezing and thawing.

## GENE INFORMATION

**Gene Name** CTHRC1 collagen triple helix repeat containing 1 [ Homo sapiens ]

**Official Symbol** CTHRC1

**Synonyms** CTHRC1; collagen triple helix repeat containing 1; collagen triple helix repeat-containing protein 1;

**Gene ID** 115908

**mRNA Refseq** NM\_001256099

**Protein Refseq** NP\_001243028

**MIM** 610635

**UniProt ID** Q96CG8

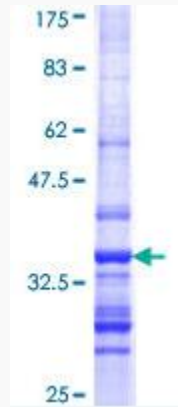
**Chromosome Location** 8q22.3

**Pathway** Noncanonical Wnt signaling pathway, organism-specific biosystem; Wnt signaling network, organism-specific biosystem;

 Tel: 1-631-559-9269 1-516-512-3133

 Email: [info@creative-biomart.com](mailto:info@creative-biomart.com)  Fax: 1-631-938-8127

 45-1 Ramsey Road, Shirley, NY 11967, USA



 Tel: 1-631-559-9269 1-516-512-3133

 Email: [info@creative-biomart.com](mailto:info@creative-biomart.com)  Fax: 1-631-938-8127

 45-1 Ramsey Road, Shirley, NY 11967, USA