

Recombinant Full Length Human CTHRC1 Protein, C-Flag-tagged

Cat. No. CTHRC1-400HFL **Lot. No.** (See product label)

SPECIFICATION

| | |
|-------------------------|---|
| Product Overview | Recombinant Full Length Human CTHRC1 Protein, fused to Flag-tag at C-terminus, was expressed in Mammalian cells. |
| Species | Human |
| Source | Mammalian Cells |
| Description | This locus encodes a protein that may play a role in the cellular response to arterial injury through involvement in vascular remodeling. Mutations at this locus have been associated with Barrett esophagus and esophageal adenocarcinoma. Alternatively spliced transcript variants have been described. |
| Form | 25 mM Tris HCl, pH 7.3, 100 mM glycine, 10% glycerol. |
| Molecular Mass | 26 kDa |
| AA Sequence | MRPQGPAASPQRLRGLLLLLLLLQLPAPSSASEIPKGGKQKAQLRQREVVDLYNGMCL QGPAGVPGRDGSPG ANGIPGTPGIPGRDGFKGEKGECLRESFEESWTPNYKQCS WSSLNYGIDLGKIAECTFTKMRSNSALRVL FSGSLRLKCRNACCQRWYFTFNGAEC SGPLPIEAIYLDQGSPEMNSTINIHRSSVEGLCEGIGAGLVD VAIWVGTCSDYKPGDASTGWNSVSRIIIIEELPKTRTRPLEQKLISEEDLAANDILDYKD DDDKV |
| Purity | > 80% as determined by SDS-PAGE and Coomassie blue staining. |

 Tel: 1-631-559-9269 1-516-512-3133

 Email: info@creative-biomart.com  Fax: 1-631-938-8127

 45-1 Ramsey Road, Shirley, NY 11967, USA

| | |
|-------------------------|---|
| Stability | Stable for 12 months from the date of receipt of the product under proper storage and handling conditions. Avoid repeated freeze-thaw cycles. |
| Storage | Store at -80 centigrade. |
| Concentration | >50 ug/mL as determined by microplate BCA method. |
| Preparation | Recombinant protein was captured through anti-DDK affinity column followed by conventional chromatography steps. |
| Protein Families | Secreted Protein |
| Full Length | Full L. |

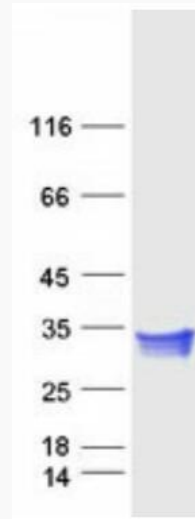
GENE INFORMATION

| | |
|------------------------|---|
| Gene Name | CTHRC1 collagen triple helix repeat containing 1 [Homo sapiens (human)] |
| Official Symbol | CTHRC1 |
| Synonyms | collagen triple helix repeat containing 1 |
| Gene ID | 115908 |
| mRNA Refseq | NM_138455.4 |
| Protein Refseq | NP_612464.1 |
| MIM | 610635 |
| UniProt ID | Q96CG8 |

 Tel: 1-631-559-9269 1-516-512-3133

 Email: info@creative-biomart.com  Fax: 1-631-938-8127

 45-1 Ramsey Road, Shirley, NY 11967, USA



Coomassie blue staining of purified CTHRC1 protein.

 Tel: 1-631-559-9269 1-516-512-3133

 Email: info@creative-biomart.com  Fax: 1-631-938-8127

 45-1 Ramsey Road, Shirley, NY 11967, USA