

## Recombinant Human CTHRC1 Protein, MBP/His-tagged

Cat. No. CTHRC1-5241H Lot. No. (See product label)

### SPECIFICATION

<b>Product Overview</b>	Recombinant human CTHRC1 protein (32-243 aa) was expressed in E. coli with MBP/His-tag.
<b>Species</b>	Human
<b>Source</b>	E.coli
<b>ProteinLength</b>	32-243 a.a.
<b>Form</b>	20mM Tris/HCl pH 8, 0,2M NaCl, 1mM EDTA, 10mM maltose
<b>Molecular Mass</b>	67.71 kDa
<b>Purity</b>	>90%
<b>Applications</b>	ELISA, WB, Antibody Production, Protein array
<b>Storage</b>	Frozen / Solution. For extended storage, conserve at -80°C. Repeated freezing and thawing is not recommended. Store working aliquots at 4 centigrade for up to one week.

### GENE INFORMATION

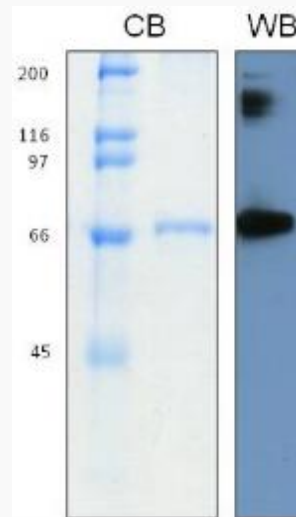
**Gene Name** CTHRC1 collagen triple helix repeat containing 1 [ Homo sapiens ]

 Tel: 1-631-559-9269 1-516-512-3133

 Email: [info@creative-biomart.com](mailto:info@creative-biomart.com)  Fax: 1-631-938-8127

 45-1 Ramsey Road, Shirley, NY 11967, USA

<b>Official Symbol</b>	CTHRC1
<b>Synonyms</b>	CTHRC1; Collagen triple helix repeat-containing protein 1; NMTC1
<b>Gene ID</b>	115908
<b>mRNA Refseq</b>	NM_001256099
<b>Protein Refseq</b>	NP_001243028
<b>MIM</b>	610635
<b>UniProt ID</b>	Q96CG8



Tel: 1-631-559-9269 1-516-512-3133

Email: [info@creative-biomart.com](mailto:info@creative-biomart.com) Fax: 1-631-938-8127

45-1 Ramsey Road, Shirley, NY 11967, USA