

Active Recombinant Human CTLA4 Protein, His-Tagged

Cat. No. CTLA4-01H Lot. No. (See product label)

SPECIFICATION

Product Overview	Recombinant Human CTLA4 Protein, His-Tagged was expressed in Baculovirus cell
Species	Human
Source	Insect Cells
Description	<p>This gene is a member of the immunoglobulin superfamily and encodes a protein which transmits an inhibitory signal to T cells. The protein contains a V domain, a transmembrane domain, and a cytoplasmic tail. Alternate transcriptional splice variants, encoding different isoforms, have been characterized. The membrane-bound isoform functions as a homodimer interconnected by a disulfide bond, while the soluble isoform functions as a monomer. Mutations in this gene have been associated with insulin-dependent diabetes mellitus, Graves disease, Hashimoto thyroiditis, celiac disease, systemic lupus erythematosus, thyroid-associated orbitopathy, and other autoimmune diseases.</p>
Form	Liquid
Bio-activity	The activity is determined by the IL-2 ELISA in a using Jurkat human acute T cell leukemia cells. The ED50 range ≤ 150 ng/ml with Human B7 1/CD80.
Molecular Mass	40.8 kDa (368aa)
Endotoxin	< 1 EU per 1ug of protein (determined by LAL method)

 Tel: 1-631-559-9269 1-516-512-3133

 Email: info@creative-biomart.com  Fax: 1-631-938-8127

 45-1 Ramsey Road, Shirley, NY 11967, USA

Purity	> 95% by SDS-PAGE
Applications	SDS-PAGE, Bioactivity
Storage	Can be stored at +2C to +8C for 1 week. For long term storage, aliquot and store at -20C to -80C. Avoid repeated freezing and thawing cycles.
Concentration	0.5mg/ml (determined by absorbance at 280nm)
Storage Buffer	Liquid in. Phosphate-Buffered Saline (pH 7.4) containing 10% glycerol

GENE INFORMATION

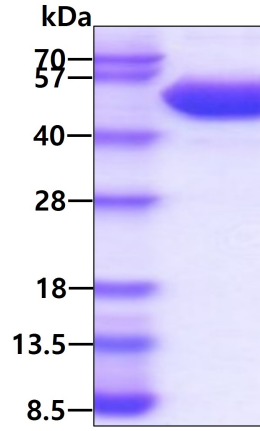
Gene Name	CTLA4 cytotoxic T-lymphocyte associated protein 4 [Homo sapiens (human)]
Official Symbol	CTLA4
Synonyms	Cytotoxic T-lymphocyte protein 4, Cytotoxic T-lymphocyte-associated antigen 4, CTLA4, ALPS5, CD, CD152, CELIAC3, CTLA-4, GRD4, GSE, IDDM12, ATGP3364
Gene ID	1493
mRNA Refseq	NM_001037631.3
Protein Refseq	NP_001032720.1
MIM	123890
UniProt ID	P16410

 Tel: 1-631-559-9269 1-516-512-3133

 Email: info@creative-biomart.com  Fax: 1-631-938-8127

 45-1 Ramsey Road, Shirley, NY 11967, USA

SDS-PAGE



3ug by SDS-PAGE under reducing condition and visualized by coomassie blue stain.

Biological Activity

Human CTLA-4 inhibits Human B7 1/CD80 induced IL-2 secretion of the Jurkat human acute T cell leukemia cells. The ED50 range ≤ 150 ng/ml.

 Tel: 1-631-559-9269 1-516-512-3133

 Email: info@creative-biomart.com  Fax: 1-631-938-8127

 45-1 Ramsey Road, Shirley, NY 11967, USA