

Recombinant Human CTLA4 Protein, C-His-tagged

Cat. No. CTLA4-024H **Lot. No.** (See product label)

SPECIFICATION

Product Overview	Recombinant Human CTLA4 Protein with C-His tag was expressed in E. coli.
Species	Human
Source	E.coli
Description	<p>Cytotoxic T-lymphocyte protein 4 (CTLA-4, CD152) is an Ig superfamily member that negatively regulates early T cell activation. The CTLA-4 protein is primarily expressed on T cells, including CD8+ cytotoxic T cells, CD4+ helper T cells, and CD4+/FoxP3+ regulatory T cells. CTLA-4 protein competes with CD28 for B7.1 (CD80) and B7.2 (CD86) binding at the cell surface, which results in the down regulation of T cell activity. The activation of SHP-2 and PP2A downstream of CTLA-4 attenuates TCR signaling. Research studies indicate that CTLA4 knockout mice display lymphoproliferative disorders leading to early death, confirming the role of CTLA-4 as a negative regulator of T cells. Mutations in the corresponding CTLA4 gene are associated with multiple disorders, including insulin-dependent diabetes mellitus, Graves disease, Hashimoto thyroiditis, celiac disease, systemic lupus erythematosus, and type V autoimmune lymphoproliferative syndrome. Additional studies demonstrate that CTLA-4 blockade is an effective strategy for tumor immunotherapy.</p>
Molecular Mass	~14 kDa
AA Sequence	KAMHVAQPAVVLASSRGIASFVCEYASPGKATEVRVTVLRQADSQVTEVCAATYMM GNELTFLDDSICTGTSSGNQVNLTIQGLRAMDTGLYICKVELMYPPPYLIGINGTQI

 Tel: 1-631-559-9269 1-516-512-3133

 Email: info@creative-biomart.com  Fax: 1-631-938-8127

 45-1 Ramsey Road, Shirley, NY 11967, USA

	YVIDPEPCPDS
Purity	Transferred into competent cells and the supernatant was purified by NI column affinity chromatography and the purity is > 85% (by SDS-PAGE).
Notes	For research use only, not for use in diagnostic procedure.
Storage	Store at 4 centigrade short term. Aliquot and store at -20 centigrade long term. Avoid freeze-thaw cycles.
Concentration	≥0.5 mg/mL
Storage Buffer	PBS, 4M Urea, pH7.4
GENE INFORMATION	
Gene Name	CTLA4 cytotoxic T-lymphocyte-associated protein 4 [Homo sapiens (human)]
Official Symbol	CTLA4
Synonyms	CTLA4; cytotoxic T-lymphocyte-associated protein 4; celiac disease 3 , CELIAC3; cytotoxic T-lymphocyte protein 4; CD; CD28; CD152; GSE; ICOS; CD152 isoform; celiac disease 3; cytotoxic T-lymphocyte antigen 4; cytotoxic T-lymphocyte-associated antigen 4; cytotoxic T-lymphocyte-associated serine esterase-4; cytotoxic T lymphocyte associated antigen 4 short spliced form; ligand and transmembrane spliced cytotoxic T lymphocyte associated antigen 4; GRD4; CTLA-4; IDDM12; CELIAC3;
Gene ID	1493
mRNA Refseq	NM_001037631

 Tel: 1-631-559-9269 1-516-512-3133

 Email: info@creative-biomart.com  Fax: 1-631-938-8127

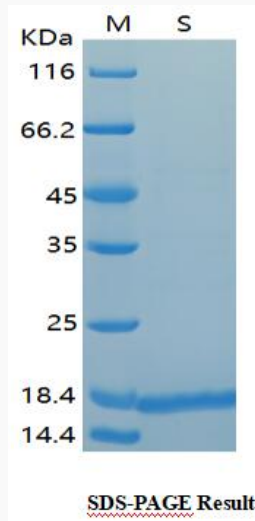
 45-1 Ramsey Road, Shirley, NY 11967, USA

Protein Refseq NP_001032720

MIM 123890

UniProt ID P16410

SDS-PAGE



 Tel: 1-631-559-9269 1-516-512-3133

 Email: info@creative-biomart.com  Fax: 1-631-938-8127

 45-1 Ramsey Road, Shirley, NY 11967, USA