

# Recombinant Human Cytotoxic T-lymphocyte-associated Protein 4, Fc-His

**Cat. No.** CTLA4-1598H    **Lot. No.** (See product label)

## SPECIFICATION

<b>Product Overview</b>	Recombinant human CTLA-4 encoding amino acid residue 37-161 of the extracellular domain was fused to the Fc region of human IgG1 with six his residues added at the carboxy-terminus, cloned into a suitable expression vector and was expressed in <i>Sf 21 cells</i> .
<b>Species</b>	Human
<b>Source</b>	Sf21 Cells
<b>ProteinLength</b>	37-161 a.a.
<b>Description</b>	CTLA4 (Cytotoxic T-Lymphocyte Antigen 4) also known as CD152, is a protein which is expressed on the surface of Helper T cells and plays an important regulatory role in the immune system. CTLA4 is a member of the immunoglobulin superfamily, expressed on the surface of Helper T cells. CTLA4 transmits an inhibitory signal to T cells. CTLA4 is potentially therapeutic in auto-immune diseases, such as rheumatoid arthritis, HIV, autoimmune thyroid disease, multiple sclerosis and may also be useful during organ transplantation and cancer treatment.
<b>Molecular Weight</b>	The predicted molecular weight of Recombinant Human CTLA-4 is Mr 40 kDa.
<b>State Of Matter</b>	Lyophilized.
<b>Purity</b>	>90% by SDS Page and analyzed by silver stain

 Tel: 1-631-559-9269    1-516-512-3133

 Email: [info@creative-biomart.com](mailto:info@creative-biomart.com)     Fax: 1-631-938-8127

 45-1 Ramsey Road, Shirley, NY 11967, USA

<b>Endotoxin</b>	<1.0 EU/g as determined by the LAL method.
<b>Biological Activity</b>	The biological activity of Human CTLA-4 was determined by its ability to inhibit IL-2 production by Jurkat cells stimulated with Raji cells or 1 µg/ml rhB7-1/Fc in the presence of PHA. The expected ED50 is typically 2 - 4 µg/ml with Raji cells or 0.1 - 0.4 µg/ml with rhB7-H1/Fc.
<b>Storage And Stability</b>	This lyophilized protein is stable for six to twelve months when stored desiccated at -20°C to -70°C. After aseptic reconstitution, this protein may be stored at 2°C to 8°C for one month or at -20°C to -70°C in a manual defrost freezer. Avoid Repeated Freeze Thaw Cycles. See Product Insert for exact lot specific storage instructions.
<b>GENE INFORMATION</b>	
<b>Gene Name</b>	<a href="#">CTLA4 cytotoxic T-lymphocyte-associated protein 4 [ Homo sapiens ]</a>
<b>Synonyms</b>	CTLA4; cytotoxic T-lymphocyte-associated protein 4; CD; CD28; CD152; CD152; CELIAC3; CTLA-4; celiac disease 3; Cytotoxic T-lymphocyte protein 4; cytotoxic T-lymphocyte antigen 4; cytotoxic T-lymphocyte-associated antigen 4; cytotoxic T-lymphocyte-associated serine esterase-4; ligand and transmembrane spliced cytotoxic T lymphocyte associated antigen 4; ICOS; GSE; IDDM12; IDDM12; CTLA-4; OTTHUMP00000163781
<b>Gene ID</b>	<a href="#">1493</a>
<b>mRNA Refseq</b>	<a href="#">NM_001037631</a>
<b>Protein Refseq</b>	<a href="#">NP_001032720</a>
<b>MIM</b>	<a href="#">123890</a>

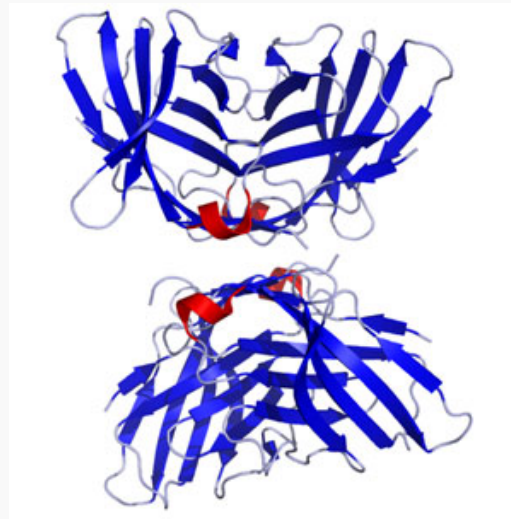
 Tel: 1-631-559-9269 1-516-512-3133

 Email: [info@creative-biomart.com](mailto:info@creative-biomart.com)  Fax: 1-631-938-8127

 45-1 Ramsey Road, Shirley, NY 11967, USA

<b>UniProt ID</b>	P16410
<b>Chromosome Location</b>	2q33
<b>Pathway</b>	Autoimmune thyroid disease ; Cell adhesion molecules (CAMs); T cell receptor signaling pathway
<b>Function</b>	Protein binding

**Structure of murine CTLA4 (CD152).**



 Tel: 1-631-559-9269 1-516-512-3133

 Email: [info@creative-biomart.com](mailto:info@creative-biomart.com)  Fax: 1-631-938-8127

 45-1 Ramsey Road, Shirley, NY 11967, USA