

Recombinant Human CTLA4 Protein (Lys36-Asp161), C-Flag tagged

Cat. No. CTLA4-1874H Lot. No. (See product label)

SPECIFICATION

Product Overview	Recombinant human CTLA4 (Lys36-Asp161) fused with C-terminus Flag tag was expressed in Mammalian cells.
Species	Human
Source	Mammalian Cells
ProteinLength	Lys36-Asp161
Form	Lyophilized powder/frozen liquid
Molecular Mass	13.86 kDa
Purity	>90% as determined by SDS-PAGE
Notes	For research use only.
Storage	Use a manual defrost freezer and avoid repeated freeze thaw cycles. Store at 2 to 8 centigrade for one week. Store at -20 to -80 centigrade for twelve months from the date of receipt.
Storage Buffer	Supplied as solution form in PBS or lyophilized from PBS.
Reconstitution	Reconstitute in sterile water for a stock solution.

 Tel: 1-631-559-9269 1-516-512-3133

 Email: info@creative-biomart.com  Fax: 1-631-938-8127

 45-1 Ramsey Road, Shirley, NY 11967, USA

Shipping They are shipped out with dry ice/blue ice unless customers require otherwise.

GENE INFORMATION

Gene Name CTLA4 cytotoxic T-lymphocyte-associated protein 4 [Homo sapiens (human)]

Official Symbol CTLA4

Synonyms

CTLA4; cytotoxic T-lymphocyte-associated protein 4; celiac disease 3, CELIAC3; cytotoxic T-lymphocyte protein 4; CD; CD28; CD152; GSE; ICOS; CD152 isoform; celiac disease 3; cytotoxic T-lymphocyte antigen 4; cytotoxic T-lymphocyte-associated antigen 4; cytotoxic T-lymphocyte-associated serine esterase-4; cytotoxic T lymphocyte associated antigen 4 short spliced form; ligand and transmembrane spliced cytotoxic T lymphocyte associated antigen 4; GRD4; CTLA-4; IDDM12; CELIAC3;

Gene ID 1493

mRNA Refseq NM_001037631

Protein Refseq NP_001032720

MIM 123890

UniProt ID P16410

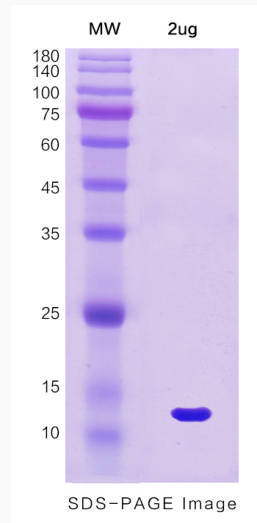
 Tel: 1-631-559-9269 1-516-512-3133

 Email: info@creative-biomart.com  Fax: 1-631-938-8127

 45-1 Ramsey Road, Shirley, NY 11967, USA



SDS-PAGE



Tel: 1-631-559-9269 1-516-512-3133

Email: info@creative-biomart.com Fax: 1-631-938-8127

45-1 Ramsey Road, Shirley, NY 11967, USA